

MAGNIFICENT JEWELS
INCLUDING
A REFINED EYE: FABULOUS JEWELS BY JAR

Geneva 17 May 2023



CHRISTIE'S







As a leader in the art market,

Christie's is committed to **building a sustainable business model** that promotes and protects the environment. Our digital platform on christies.com offers a conscious approach, creating an immersive space where we bring art to life through high quality images, videos and in-depth essays by our specialists.

With this robust online support, Christie's will print fewer catalogues to ensure that we achieve our goal of **Net Zero by 2030**. However, when we do print, we will uphold the highest sustainable standards.

The catalogue you are reading is:



printed on fully recycled paper;



printed with vegetable-based ink and biodegradable laminates;



printed in close proximity to our markets in an effort to reduce distribution emissions.



Please scan for more information about our sustainability goals and projects.

CHRISTIE'S



SCIENCE
BASED
TARGETS

DRIVING AMBITIOUS CORPORATE CLIMATE ACTION



MAGNIFICENT JEWELS

AUCTION

Wednesday 17 May 2023 15.00h (Lots 501 – 602)

under the aegis of

Maître Jean Christin, Huissier Judiciaire
At the Four Seasons Hotel des Bergues
33 Quai des Bergues, 1201 Geneva

VIEWING

Saturday	13 May	14.00 - 18.00 h
Sunday	14 May	10.00 - 18.00 h
Monday	15 May	10.00 - 18.00 h
Tuesday	16 May	10.00 - 18.00 h
Wednesday	17 May	10.00 - 12.00 h

ALSO ON VIEW

Jewels Online: The Geneva Edit
Sale number: 21988
Online auction: 16-25 May, 2023

AUCTIONEERS

Maximillian Fawcett, Rahul Kadakia

AUCTION CODE AND NUMBER

In sending absentee bids or making enquiries, this sale
should be referred to as

VICEROY-21987

ABSENTEE AND TELEPHONE BIDS

Tel: +41 (0)22 319 1766

CONDITIONS OF SALE

The sale of each lot is subject to the Conditions of Sale, Important Notices and Explanation of Cataloguing Practice, which are set out in this catalogue and on christies.com. Please note that the symbols and cataloguing for some lots may change before the auction. For the most up to date sale information for a lot, please see the full lot description, which can be accessed through the sale landing page on christies.com.

BUYER'S PREMIUM

In addition to the hammer price, the successful bidder agrees to pay us a buyer's premium on the hammer price of each lot sold. On all lots we charge 26% of the hammer price up to and including CHF 900,000, 21% on that part of the hammer price over CHF 900,000 and up to and including CHF 6,000,000, and 15% of that part of the hammer price above CHF 6,000,000.



Please scan for complete auction information

FRONT COVER

Lot 534

BACK COVER

Lot 602

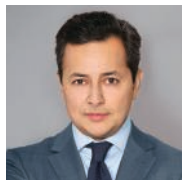
CHRISTIE'S

WORLDWIDE JEWELLERY DEPARTMENT

INTERNATIONAL TEAM



FRANÇOIS CURIEL
Chairman, Europe
fcuriel@christies.com
+33 1 40 76 84 00



RAHUL KADAKIA
*International Head,
Jewellery*
rkadakia@christies.com
+1 212 636 2310



VICKIE SEK
Chairman, Jewellery, Asia
vsek@christies.com
+852 297 89922



JULIEN BRUNIE
*International Head,
Private sales, Jewellery*
jbrunie@christies.com
+44 (0) 20 7104 5758

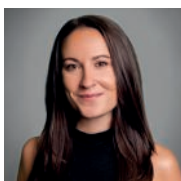
AMERICAS



ANGELINA CHEN
Senior Specialist, New York
achen@christies.com
+1 212 636 2303



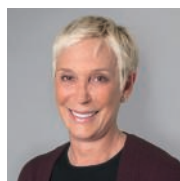
**ALEXANDRA
DAMIANOS**
*Associate Specialist,
New York*
adamianos@christies.com
+1 212 636 2308



JACQUELINE DISANTE
Head of Sale, New York
jdisante@christies.com
+1 212 636 2313



**LAUREN
FRIEDLANDER**
Junior Specialist, New York
lfriedlander@christies.com
+1 212 636 2318



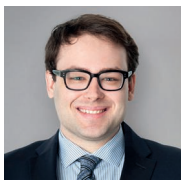
LISA HUBBARD
Senior Advisor, Los Angeles
lhubbard@christies.com
+1 310 385 2624



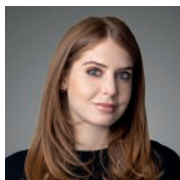
KELSEY KALAW
Junior Specialist, New York
kkalaw@christies.com
+1 212 636 2319



DAPHNE LINGON
*Head of Department,
Americas*
dlingon@christies.com
+1 212 636 2309



**CLAIBOURNE
POINDEXTER**
*Senior Specialist,
New York*
cpoindexter@christies.com
+1 212 636 2316



ELEANOR WALPER
Specialist, Los Angeles
ewalper@christies.com
+1 310 385 2665

ASIA



KAREN AU YEUNG
*Senior International
Specialist, Hong Kong*
kau-yeung@christies.com
+852 2978 9921



NICOLA CHAN
*Junior Specialist,
Hong Kong*
nchan@christies.com
+852 2978 9928



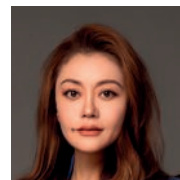
RONNY HSU
Specialist, Hong Kong
rhsu@christies.com
+852 2978 6979



CAROLINE LIANG
Specialist, Shanghai
cliang@christies.com
+86 212 226 1520



BELINDA YUEN
*Junior Specialist,
Hong Kong*
byuen@christies.com
+858 2978 6718



TING WANG
*Senior International
Specialist, Beijing*
tingwang@christies.com
+86 108 572 7957

EUROPE, MIDDLE EAST, RUSSIA AND INDIA



HENRY BAILEY
Head of Department,
London
hbailey@christies.com
+44 20 7389 2382



ANGELA BERDEN
Senior Specialist, Geneva
aberden@christies.com
+41 22 319 17 82



LUKAS BIEHLER
Specialist, Geneva
lbiehler@christies.com
+41 22 319 17 47



LEO CRIACO
Head of Department,
Milan
lcriaco@christies.com
+39 02 303 28 335



VIOLAINE D'ASTORG
Head of Department,
Paris
vdastorg@christies.com
+33 1 40 76 85 81



MAX FAWCETT
Head of Department,
Geneva
mfawcett@christies.com
+41 22 319 17 38



MEI Y GIAM
Private Sales Director,
London
mgiam@christies.com
+44 20 7389 5104



ALTHÉA HANSHAW
Specialist, Geneva
ahanshaw@christies.com
+41 22 319 17 64



ARABELLA HISCOX
Specialist, London
ahiscox@christies.com
+44 20 7752 3208



JESSICA KOERS
Head of Department,
Amsterdam
jkoers@christies.com
+31 20 575 5915



BAOMING LI
Associate Specialist, Paris
baomingli@christies.com
+33 1 40 76 72 59



KEITH PENTON
Consultant, London
keithpenton@christiespartners.com
+44 20 7752 3281



FREDERIK SCHWARZ
Consultant, Berlin
fschwarz@christiespartners.com
+49 175 524 4379



MICHAELA SUHL
Junior Specialist, London
msuhl@christies.com
+44 20 7389 2860

SERVICES FOR THIS AUCTION

GLOBAL MANAGING DIRECTOR

Emmanuel Danan
Tel: +33 (0)1 40 76 83 50

REGIONAL MANAGING DIRECTOR

Isabel Coutier
Tel: +41 (0)22 319 1704

HEAD OF SALE MANAGEMENT

Sanda Nyun Han
Tel: +41 (0)22 319 1733

SALE COORDINATORS

Sanda Nyun Han
Amélie Villame
Tel: +41 (0)22 319 1703

BUSINESS COORDINATOR

Kim Van den Noort
Tel: +41 (0)22 319 1725

CATALOGUERS

Vittoria Lanza
Tel: +41 (0)22 319 1768
Mélanie Matthes
Tel: +41 (0)22 319 1794
Michaela Suhl
Tel: +44 20 7389 2860

SERVICES

PRE-SALE SERVICES

Client Service Team
Sale Registrations, Sale Tickets, and General Information
Tel: +41 (0) 22 319 17 66
Email: infoswitzerland@christies.com

POST-SALE SERVICES

Daniel Chau
Post-Sale Coordinator
Payment, Shipping, and Collection
Tel: +41 (0)22 319 1780
Email: PostSaleSwiss@christies.com

PRIVATE VIEWING

Appointments may be made for private viewing through any of our offices or agents, but the auctioneers reserve the right to demand satisfactory identification and to refuse admittance. In Geneva, appointments may be made by telephoning Kim van den Noort on Tel: + 41 (0) 22 319 1725.

ABSENTEE AND TELEPHONE BIDS

Tel: +41 (0)22 319 1766
Email: bidsgeneva@christies.com

AUCTION RESULTS

Tel: +41 (0)22 319 1766
christies.com

EMAIL

For general enquiries about this auction, emails should be addressed to the Sale Coordinator(s).

christies.com

COPYRIGHT NOTICE

No part of this catalogue may be reproduced, stored in a retrieval system or transmitted by any form or by any means, electronic, mechanical, photocopying, recording or otherwise, without the prior written permission of Christie's.

© COPYRIGHT, CHRISTIE, MANSON & WOODS LTD. (2023)



JEWELS ONLINE: THE GENEVA EDIT

16-25 May 2023



STERLÉ RUBY-IN-ZOISITE AND
DIAMOND BIRD BROOCH



VAN CLEEF & ARPELS
CORAL 'ROSE DE NOËL' EARRINGS



BULGARI SAPPHIRE, COLOURED
SAPPHIRE AND DIAMOND EARRINGS



DAVID WEBB RUBY AND
ENAMEL 'FROG' BANGLE



MELLERIO ART DECO EMERALD AND
DIAMOND SAUTOIR



CUSI SAPPHIRE AND
DIAMOND RING



CARTIER ART DECO EGYPTIAN REVIVAL
DIAMOND 'SPHINX' BROOCH



EARLY 20TH CENTURY SET OF
RUBY AND DIAMOND JEWELLERY





MAGNIFICENT JEWELS
INCLUDING
A REFINED EYE: FABULOUS JEWELS BY JAR
LOTS 501-602



(two views)

PROPERTY OF A LADY

501

VAN CLEEF & ARPELS RUBY AND DIAMOND RING

Cushion-shaped ruby, round diamonds, 18k yellow gold (French mark), signed Van Cleef & Arpels, maker's mark (Ehret, Successeurs), numbered

SSEF, 2023, report no. 127770: Siam (Thailand), no indications of heating

Size/Dimensions: US ring size 6

Gross weight: 9.5 grams

CHF50,000-70,000



+502

**CARTIER MID 20TH CENTURY EMERALD, RUBY AND DIAMOND
'LOVEBIRDS' CLIP-BROOCH**

Carved emerald, round and oval-shaped cabochon rubies, round and single-cut diamonds, platinum and 18k yellow gold (French marks), 1950s, signed Cartier, Paris, maker's mark (Cartier, Société Anonyme), numbered

Size/Dimensions: 5.1 x 3.1 cm

Gross weight: 27.1 grams

CHF70,000-100,000

PROPERTY OF A LADY



~+503

BULGARI MULTI-GEM EARRINGS AND AN ASSOCIATED BRACELET

Oval-shaped cabochon coral, cabochon emeralds, round diamonds, 18k yellow gold (Italian marks), earrings signed Bvlgari, bracelet unsigned

Size/Dimensions: earrings 3.2 cm; bracelet inner circumference 16.5 cm
Gross weight: 200.8 grams

CHF50,000-70,000

Please note that this lot incorporates material from endangered species which could result in export restrictions.

PROPERTY OF A LADY



+504

**CARTIER ART DECO EMERALD, DIAMOND AND ENAMEL
NECKLACE AND A PAIR OF ASSOCIATED EARRINGS**

Carved emerald beads, old, single and baguette-cut diamonds,
black enamel, circa 1920, necklace signed Cartier, London, and numbered,
earrings unsigned, clip of later addition

Size/Dimensions: necklace 40.5 cm shortest strand; earrings 3.1 cm
Gross weight: 110.3 grams

CHF90,000-130,000



Lot 504 enlarged

PROPERTY OF A GENTLEMAN



(three views)

505

CARTIER EMERALD AND DIAMOND RING

Hexagonal-shaped emerald, marquise-shaped, baguette-cut and round diamonds, platinum and 18k yellow gold (French marks), signed Cartier, maker's mark (Cartier, Société Anonyme), numbered

SSEF, 2023, report no. 127052: Colombia, minor amount of oil in fissures

Size/Dimensions: US ring size 3¾

Gross weight: 17.4 grams

CHF40,000-60,000

PROPERTY OF A LADY



(three views)



+506

COLOURED DIAMOND RING

Fancy yellow cut-cornered rectangular modified brilliant-cut diamond of 10.10 carats, 18k yellow gold

GIA, 2023, report no. 2225817882: 10.10 carats, Fancy Yellow, natural colour, VVS1 clarity

Size/Dimensions: US ring size 6¼
Gross weight: 5.7 grams

CHF40,000-60,000



|

CARTIER AND 1950s

The 1950s were an opportunity for Cartier to experiment with techniques and themes.

The end of the war marked a shortage of materials and a continuation of the Art Deco influences in design, with a trend for finer, less bulky jewellery.

|

PROPERTY OF A GENTLEMAN

+507

CARTIER RUBY AND DIAMOND LEAF BROOCH

Round and oval-shaped rubies, old-cut diamonds, platinum and 18k white gold (French marks), circa 1950, signed Cartier, maker's mark (Cartier, Société Anonyme), numbered

Size/Dimensions: 5.4 x 4.1 cm

Gross weight: 30.5 grams

CHF50,000-70,000



PROPERTY OF A LADY

+508

CARTIER RUBY AND DIAMOND BROOCH

Oval, cushion-shaped and old-cut rubies, round and old-cut diamonds, platinum and 18k yellow gold (French marks), 1950s, signed Cartier, Paris, maker's mark (Dubois, R.), numbered

Size/Dimensions: 8.0 x 4.5 cm

Gross weight: 34.1 grams

CHF30,000-50,000





(two views)

PROPERTY OF A LADY

+509

KERN SAPPHIRE AND DIAMOND RING

Cushion-shaped sapphire, single-cut and round diamonds, 18k white gold, 1960s, signed Kern, numbered

SSEF, 2023, report no. 128455: Ceylon, no indications of heating

Size/Dimensions: US ring size 6 $\frac{3}{4}$

Gross weight: 13.6 grams

CHF80,000-120,000



(two views)

PROPERTY OF A GENTLEMAN

+510

HARRY WINSTON DIAMOND RING

Marquise brilliant-cut diamond of 8.56 carats, triangular-shaped diamonds, platinum, signed Winston, maker's mark (Jacques Timey)

GIA, 2023, report no. 5154401: 8.56 carats, D colour, VVS1 clarity

Size/Dimensions: US ring size 6 $\frac{1}{4}$

Gross weight: 8.3 grams

CHF200,000-300,000

+511

SAPPHIRE AND DIAMOND PENDANT

Oval-shaped sapphire of 49.34 carats, old-cut diamonds, 18k white gold

SSEF, 2023, report no. 127713: 49.341 carats, Ceylon (Sri Lanka),
no indications of heating

Size/Dimensions: 4.1 cm
Gross weight: 14.2 grams

CHF80,000-120,000



+512

**VAN CLEEF & ARPELS ART DECO SAPPHIRE AND
DIAMOND BRACELET**

Oval-shaped sapphires, baguette-cut, square-shaped and round diamonds,
platinum (French mark), circa 1935, signed Van Cleef & Arpels, Paris,
maker's marks (Rubel Frères)

Size/Dimensions: 18.0 cm
Gross weight: 101.2 grams

CHF50,000-80,000





(two views)

PROPERTY OF A LADY

+513

MELLERIO EMERALD AND DIAMOND RING

Octagonal-shaped emerald, round diamonds, platinum and 18k yellow gold (French marks), 1959, signed Mellerio, numbered, black Mellerio dits Meller case

SSEF, 2022, report no. 121335: declared weight of 6.78 carats, Colombia, no indications of clarity modification in fissures

Size/Dimensions: US ring size 4¾ (with sizing beads)

Gross weight: 12.4 grams

CHF150,000-200,000



(two views)

PROPERTY OF A LADY

+514

BOUCHERON COLOURED DIAMOND AND DIAMOND RING

Fancy yellow cut-cornered rectangular modified brilliant-cut diamond of 10.89 carats, trapeze and rectangular-shaped diamonds, 18k yellow gold, signed Boucheron, numbered

GIA, 2023, report no. 6224889978: 10.89 carats, Fancy Yellow, natural colour, Internally Flawless

Accompanied by original drawing by Boucheron

Size/Dimensions: US ring size 6½ (with U-shaped ring sizer)

Gross weight: 12.1 grams

CHF80,000-120,000



BOUCHERON
PARIS



PROPERTY OF A LADY



(three views)



+515

SPINEL RING

Cushion-shaped spinel of 20.83 carats, 18k white gold

SSEF, 2023, report no. 127027: natural red spinel of 20.838 carats, Tanzania, no indications of treatment

Size/Dimensions: US ring size 6½

Gross weight: 7.9 grams

CHF100,000-150,000

"(...) The sapphire of 26.499 ct (...) contains a tiny zircon inclusion at the surface on which we were able to carry out radiometric age dating. The analyses of the zircon inclusion within the sapphire reveal an approximate age of 45 million years. (...)"

SSEF, 2021, Special Letter of report no. 119358



+516

VAN CLEEF & ARPELS SAPPHIRE AND DIAMOND BROOCH

Oval-shaped sapphire of 26.50 carats, pear-shaped and round diamonds, platinum and 18k white gold, signed V.C.A., numbered

AGL, 2023, report no. 1131300: 26.50 carats, Burma (Myanmar), no gemmological evidence of heat, no clarity enhancement

Gübelin, 2023, report no. 23020072: declared weight of 26.50 carats, no indications of heating, with Information Sheets on Unheated sapphires and on Sapphires, origin not determinable

SSEF, 2021, report no. 119358: 26.499 carats, Burma (Myanmar), no indications of heating, with Special Letter on the approximate age of the stone

Size/Dimensions: 5.2 x 3.2 cm

Gross weight: 28.0 grams

CHF400,000-600,000

VAN CLEEF & ARPELS

It seems natural that Van Cleef & Arpels, born from the marriage of Estelle Arpels, the daughter of a precious stone dealer, and Alfred Van Cleef, a lapidary and son of a long line of master gem-cutters, should be known for handling only the finest quality gemstones.

The Maison is renowned for their use of the best-coloured stones, such as these sapphires, in combination with diamonds, as seen in lots 516 and 517.



+517

VAN CLEEF & ARPELS SAPPHIRE AND DIAMOND BRACELET

Oval-shaped sapphires of 13.33, 11.54 and 10.65 carats, round and baguette-cut diamonds, platinum and 18k white gold, signed V.C.A, numbered

Gübelin, 2023, report no. 23020073: 3 sapphires, including two Madagascar of 13.33 and 11.54 carats, one Sri Lanka (Ceylon) of 10.66 carats, no indications of heating, with Information Sheet on Unheated sapphires

SSEF, 2021, report no. 119360: 13.334 carats, Ceylon (Sri Lanka), no indications of heating

SSEF, 2021, report no. 119361: 11.544 carats, Burma (Myanmar), no indications of heating

SSEF, 2021, report no. 119359: 10.658 carats, Burma (Myanmar), no indications of heating

Size/Dimensions: 16.5 cm

Gross weight: 62.9 grams

CHF250,000-350,000



+518

VAN CLEEF & ARPELS DIAMOND BROOCH

Square, rectangular-shaped and baguette-cut diamonds, platinum and 18k white gold (French marks), 1950s, signed Van Cleef & Arpels, maker's mark

Size/Dimensions: 5.1 x 5.1 cm

Gross weight: 23.5 grams

CHF55,000-75,000



PROPERTY OF A LADY

519

VAN CLEEF & ARPELS DIAMOND BRACELET

Pear-shaped and baguette-cut diamonds, platinum and 18k white gold, unsigned, maker's mark (Van Cleef & Arpels), numbered, brown Van Cleef & Arpels pouch

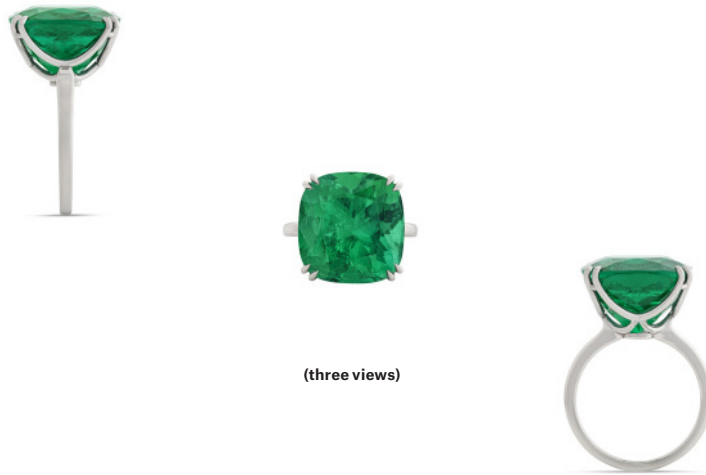
Size/Dimensions: 18.0 cm

Gross weight: 43.0 grams

CHF70,000-100,000



PROPERTY OF A LADY



+520

EMERALD RING

Cushion-shaped emerald of 14.72 carats, platinum

SSEF, 2023, report no. 127028: 14.724 carats, Colombia,
minor amount of resin in fissures

Size/Dimensions: US ring size 6¼

Gross weight: 8.7 grams

CHF60,000-80,000

PROPERTY OF A LADY

"(...)The mineralogy of Ceylon has hitherto been little understood. It has often been suggested as the 'Ophir' of the time of Solomon, and doubtless, from its production of gems, it might deserve the name.(...)"

- S.W.Baker, Eight years in Ceylon, 1891, pp. 46-47



(three views)

+521

SAPPHIRE AND DIAMOND RING

Cushion-shaped sapphire of 28.73 carats, pear-shaped diamonds, platinum

SSEF, 2022, report no. 125007: 28.736 carats, Ceylon (Sri Lanka),
no indications of heating

Size/Dimensions: US ring size 4¼
Gross weight: 20.0 grams

CHF200,000-300,000



PROPERTY OF A LADY



+522

JAR MOONSTONE, SAPPHIRE AND DIAMOND EARRINGS

Pear-shaped cabochon moonstones, round sapphires and diamonds,
18k rose gold and silver, unsigned, pink JAR case

Size/Dimensions: 6.2 cm

Gross weight: 45.2 grams

CHF120,000-180,000

PROVENANCE:

Christie's, New York, 29 July 2020, sale 18990, lot 123



+523

BULGARI SAPPHIRE, EMERALD AND DIAMOND SAUTOIR

Oval and round-shaped cabochon sapphires, calibré buff-top sapphires and emeralds, emerald bead, round and baguette-cut diamonds, 18k yellow gold (Italian mark), signed Bvlgari

SSEF, 2023, report no. 128616: Ceylon, no indications of heating

Size/Dimensions: necklace 69.5 cm; pendant 7.7 cm

Gross weight: 200.3 grams

CHF200,000-300,000



PROPERTY OF A GENTLEMAN



(three views)

+524

CARTIER RUBY AND DIAMOND RING

Cushion-shaped ruby of 8.21 carats, round diamonds, 18k yellow gold (French mark), signed Cartier, Paris

SSEF, 2022, report no. 124590: 8.218 carats, Burma (Myanmar), no indications of heating, minor amount of oil in fissures

Size/Dimensions: US ring size 5½ (with U-shaped ring sizer)

Gross weight: 11.7 grams

CHF100,000-150,000



+525

**RENÉ BOIVIN SET OF RUBY AND DIAMOND
'PASSEMENTERIE' JEWELLERY**

Comprising a bracelet and a ring
Round, pear-shaped and old-cut rubies, round and single-cut diamonds,
18k yellow gold (French marks), circa 1950, maker's mark (Charles Profilet),
brown René Boivin fitted case

Size/Dimensions: bracelet 18.0 cm; US ring size 6¾
Gross weight: 124.2 grams

CHF60,000-90,000

LITERATURE:

Cf. F. Cailles, *René Boivin Joaillier*, Les Éditions de l'amateur, Paris, 1994, p. 324
for an illustration of a ring of similar design, and p. 329 for an illustration of a
set of similar design.

PROPERTY OF A GENTLEMAN



(three views)

+526

EMERALD AND DIAMOND RING

Rectangular-shaped emerald, square-shaped diamonds, platinum

SSEF, 2022, report no. 126058: Colombia, minor amount of oil in fissures

Size/Dimensions: US ring size 9¼

Gross weight: 12.3 grams

CHF100,000-150,000

PROPERTY OF A LADY



+527

DIAMOND NECKLACE

Pear, marquise-shaped and round diamonds, platinum, pear-shaped pendants detachable

Size/Dimensions: 35.6 cm

Gross weight: 82.5 grams

CHF50,000-70,000

PROPERTY OF A LADY



(reduced size)

+528

CHAUMET BELLE EPOQUE DIAMOND CHOKER

Old-cut diamonds, platinum, circa 1912, unsigned

Accompanied by original archival document by Chaumet

Size/Dimensions: 34.0 cm

Gross weight: 149.6 grams

CHF250,000-350,000

BY APPOINTMENT
J. CHAUMET

SUCCESSEUR
DE

12,

Compte & Courant
de



P.

THE ÉCHARPE

Although known since its discovery by European explorers in Colombia during the 16th century, platinum was not used in jewellery before the start of the Belle Époque at the turn of the century.

At this time a significant platinum deposit was found in Russia's Ural Mountains and allowed for a new workable alloy to be created which jewellers discovered could be used as a lighter and stronger substitute to the silver and gold settings previously used.

It was during these years and thanks to the new platinum working techniques that Louis Cartier began to design very refined jewels, resembling embroideries and needle work, as the platinum secured the stones with minimal metalwork.

This allowed for the creation of the écharpe. Well known as a shoulder sash, elegantly draped from shoulder to shoulder, as seen by the beautiful examples commissioned by Mrs Vanderbilt at Cartier. Lot 529 being a rare surviving écharpe from this period.



Lot 529 enlarged

PROPERTY OF A LADY



(reduced size)

529

CARTIER BELLE EPOQUE NATURAL PEARL AND DIAMOND ÉCHARPE

Natural pearls of various shapes ranging from 4.75 to 4.00 mm, old and rose-cut diamonds, platinum (French marks), 1910, signed Paris, Cartier, Londres, maker's mark (Droguet Henri)

SSEF, 2023, report no. 128557: 504 natural pearls, saltwater

Size/Dimensions: 27.5 cm shortest strands of the upper part;
tassel 17.5 cm long

Gross weight: 132.0 grams

CHF300,000-500,000

LITERATURE:

Cf. J. Rudoe, *Cartier, 1900 - 1939*, British Museum Press, London, 1997,
p. 68 fig. 52



Lots 530, 536 and 537, enlarged

A HIGHLY IMPORTANT COLLECTION
OF ANTIQUE JEWELLERY



THE REGAL SPLENDOUR
OF THE EUROPEAN COURTS





This tiara is understood to have been passed on to the Duchess by the Marchioness of Crewe, daughter of Hanna Rothschild, Countess of Rosebery, and the mother of the Duchess of Roxburghe. As the wife of an important Liberal statesman and ambassador to France, Lady Crewe was a prominent figure in London society.

THE REGAL SPLENDOUR OF THE EUROPEAN COURTS



+530

VICTORIAN DIAMOND TIARA / NECKLACE

Old and rose-cut diamonds, silver and gold, main part detachable and wearable as a necklace or a tiara, lower part detachable and wearable as a bandeau and as a choker, circa 1890

Size/Dimensions: tiara inner circumference 44.5 cm, height 7.0 cm; necklace 44.5 cm, detachable panels of 6.6 and 5.4 cm; bandeau/choker inner circumference 45.8 cm, detachable panels of 9.8 and 5.4 cm
Gross weight: 310.20 grams

CHF700,000-1,000,000

PROVENANCE:

Formerly the property of Mary, Duchess of Roxburghe (1915-2014)
Geneva, 12 May 2015, lot 493

THE REGAL SPLENDOUR OF THE EUROPEAN COURTS



+531

VICTORIAN DIAMOND TIARA / NECKLACE

Old-cut diamonds of various shapes, silver and gold, circa 1860

Size/Dimensions: tiara inner circumference 32.4 cm, height 5.2 cm;
necklace inner circumference 37.5 cm

Gross weight: 115.5 grams

CHF300,000-600,000





Nellie Melba wearing Lot 532 with her father, David Mitchell, and a young girl, in her native Melbourne
Photo © Everett Collection Historical / Alamy Stock Photo

THE REGAL SPLENDOUR OF THE EUROPEAN COURTS

DAME NELLIE MELBA

The Maison Cartier of Paris created the *Guirlande Style*, of which the elegant diamond and pearl necklace – a ‘devant de corsage’ – presented in this lot is a beautiful example. And the story behind the jewel makes it unique and historic. It was created in 1902 for one of the most famous coloratura sopranos of the late Victorian era, Nellie Melba.

Nellie Melba, from Australia, emerged as a star at the Royal Opera House in Covent Garden in London thanks to the patronage of Lady de Grey, later Marchioness of Ripon, a prominent figure in the cosmopolitan drawing rooms of the European aristocracy. Melba later recalled, ‘I date my success in London quite distinctly from the great night of 15 June 1889’, when she received the full approval of the public and the critics.

Lady de Grey took Melba under her wing and introduced her to the high society of London and in particular to the Prince and Princess of Wales, who became fascinated with her voice. She was invited at Windsor to sing for Queen Victoria, and when Edward VII succeeded to the throne in 1901 he requested that Melba sing at his coronation the following year.

For that particular occasion Melba needed magnificent jewels. Once again Lady de Grey came to her aid: fond of jewellery and in particular of the creations by Cartier in the new *Guirlande Style*, she introduced Melba to the French firm. Thanks to the Cartier exhibition in Canberra in 2018, and the curator Margaret Young-Sánchez’s chapter on Dame Nellie Melba in the catalogue of that exhibition, we know exactly what the soprano purchased from Cartier from 1901 onwards.

THE REGAL SPLENDOUR OF THE EUROPEAN COURTS

On 1 April 1902, as the coronation approached, Melba bought a necklace with eleven pear-shaped diamond pendants that could also be worn as a tiara. At the same time she ordered two custom-made jewels. One, described as a turquoise and diamond corsage ornament. The second jewel is the corsage ornament-necklace presented in this lot. She received it on 3 June 1902, and wore it at the Grand Coronation Concert held at the Albert Hall on 11 June, where she sang the National Anthem.

The coronation was scheduled for 26 June, but two days before that Edward VII suffered acute appendicitis, and the coronation was postponed. Sadly Melba was already committed to a concert tour in Australia, her first return to her country since 1886.

A letter from King Edward to the Governor-General of Australia praising Melba enhanced her reputation. She received a warm welcome throughout the country and in New Zealand. Newspaper reviews described her gowns and jewels in every detail. At her first concert in Sydney, on 11 October 1902, she wore the present jewel as a corsage ornament.

Stefano Papi, Author and Jewellery Historian, April 2023



+532

**CARTIER BELLE EPOQUE NATURAL PEARL AND DIAMOND
'GARLAND STYLE' DEVANT-DE-CORSAGE**

Natural pearls measuring approximately 10.80, 9.20, 9.07 mm, old and rose-cut diamonds, platinum, two diamond bracelets and the devant-de-corsage may be joined and worn as a necklace, circa 1902, unsigned

Size/Dimensions: 40.5 x 15.5 cm; bracelets 16.5 cm
Gross weight: 137.6 grams

CHF2,500,000-3,500,000

PROVENANCE:

Formerly the property of Dame Nellie Melba (1861 - 1931)
Thence by descent through a noble English family

EXHIBITED:

Cartier: The Exhibition, National Gallery of Australia, Canberra, 2018

(reduced size)

SHOULD YOU WISH TO BID ON THIS LOT, YOU WILL BE REQUIRED TO
OBTAIN A HIGH VALUE PADDLE.

THE REGAL SPLENDOUR OF THE EUROPEAN COURTS



+533

CHAUMET EARLY 20TH CENTURY SAPPHIRE AND DIAMOND TIARA / NECKLACE

Oval and round-shaped cabochon sapphires, rectangular-shaped sugarloaf sapphire, old and rose-cut diamonds, platinum (French mark), 18k white gold (French marks) clasp, tiara fitting, 1921, unsigned, maker's maker (Michel Ballada)

SSEF, 2023, report no. 128560: 8 sapphires, Ceylon (Sri Lanka), no indications of heating

Size/Dimensions: tiara internal diameter 16.1 cm; necklace 38.5 cm
Gross weight: 152.9 grams

CHF300,000-600,000

LITERATURE:

Hardy J., *Sapphire, A Celebration of Colour*, Thames & Hudson Ltd., London, 2021, p. 113

CHAUMET TIARAS

Delicacy, elegance, use of unique gemstones and respect for new fashion trends are what make Chaumet's tiaras one of the most sought-after head ornaments since the time of Napoleon by royals and others from all over the globe.

It was especially between the late 1910s and early 1930s that Chaumet turned their tiaras into jewellery with simple, linear lines, embellished with stones that create contrasts and give geometricity thanks to their cuts.

Example is lot 533, whose movement is given by these cabochon sapphires embellished with three separate lines of calibr -cut diamonds. Suited to the women of the Roaring Twenties, this transformable tiara becomes a perfect necklace that emphasises the geometric shapes of the dresses found in the wardrobes of the most elegant women throughout Europe.





THE REGAL SPLENDOUR OF THE EUROPEAN COURTS

Lot 534 is a perfect example of how Jewellery history goes hand in hand and is intertwined with the history of each individual, narrating emotions and encounters.

On the occasion of his retirement from DeBeers Consolidated Mines to begin his adventure as Governor of Canada, Vere Ponsonby, Earl of Bessborough, received diamonds as a gift from his colleagues.

It was 1931, shortly before the start of his new office, when he travelled to the heart of Paris, to 12 Place Vendome. Here he commissioned Chaumet to make a tiara to adorn the head of his wife on his appointment as the Governor General of Canada.

Attached to this precious jewel characterised by geometric and sinuous lines, the Countess of Bessborough, Roberte de Neuflize Ponsonby, wore it on important occasions such as the coronations of King George VI in 1937 and Queen Elizabeth II in 1953, but not only. It was in 1937 when the father of the president of the United States John F. Kennedy, Joseph Kennedy, moved to England as ambassador with his wife, Rose Elizabeth Fitzgerald Kennedy. Invited to court and having no tiara of her own, Rose Elizabeth received the famous tiara on loan from the Countess.



Vere Brabazon Ponsonby, 9th Earl of Bessborough and his wife Roberte wearing Lot 534, circa 1945
Photo © Yousuf Karsh / Library and Archives Canada

THE REGAL SPLENDOUR OF THE EUROPEAN COURTS



+534

THE BESSBOROUGH DIAMOND TIARA

AN IMPRESSIVE CHAUMET ART DECO DIAMOND TIARA

Marquise-shaped diamond, single and old-cut diamonds, platinum (French marks), 1931, maker's mark

Size/Dimensions: inner circumference 52.5 cm
Gross weight: 136.5 grams

CHF800,000-1,500,000

PROVENANCE:

Vere Brabazon Ponsonby, 9th Earl of Bessborough (1880-1956) for his wife, Roberte Countess of Bessborough [née Poupart de Neufelize] (1892 - 1979). The marquise-shaped diamond was offered to the Earl, in 1931, as a gift by the De Beers diamond company when he left his position of director. Thence by descent through the family.

EXHIBITED:

Crowning Glories: Two centuries of Tiaras, Museum of Fine Arts, Boston, USA, 2000

Dignity and Beauty: The Story of the Tiara, Bunkamura Museum of Art, Tokyo, and Nigata Bandaijima Museum of Art, Japan, 2007

LITERATURE:

D. Scarisbrick, R. Hurel, *Chaumet Paris, Deux siècles de création*, Paris-Musées, 1998, pp. 138 - 139

Imperial Splendours, The art of Jewellery since the 18th century, Chaumet and The Palace Museum, 2017, p. 89

H. Loyrette, *Chaumet, Parisian Jeweler since 1780*, Flammarion, Paris, 2017, pp. 174 - 175



THE REGAL SPLENDOUR OF THE EUROPEAN COURTS



(reduced size)

+535

AN IMPRESSIVE ANTIQUE EMERALD AND DIAMOND NECKLACE / TIARA

Square, rectangular, cushion and pear-shaped emeralds, old-cut diamonds, silver and gold, with tiara frame and screwdriver, early to mid 19th century, blue case

Please refer to the Jewellery department for the gemmological report.

Size/Dimensions: 47.0 cm

Gross weight: 87.5 grams

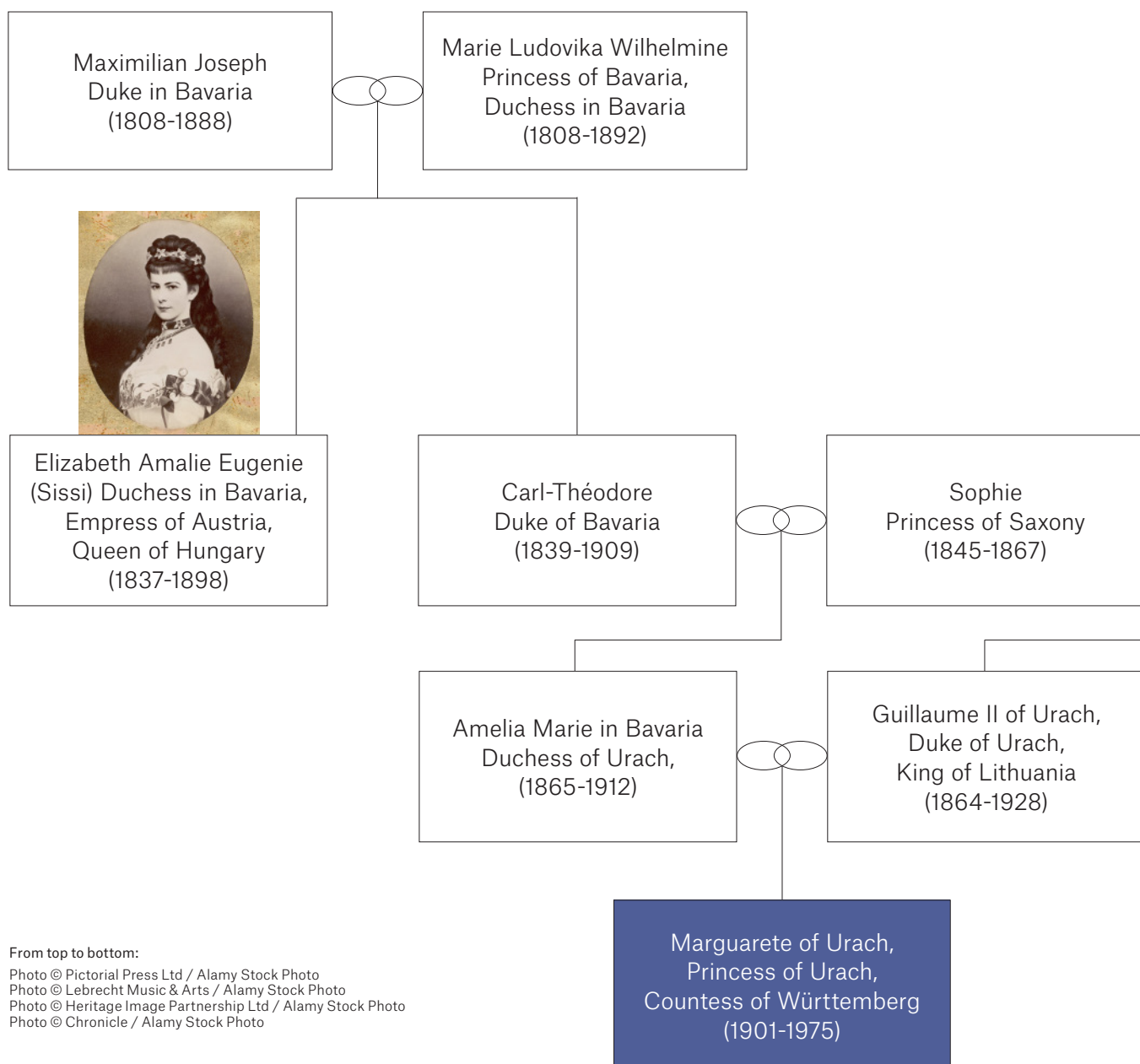
CHF1,000,000-1,500,000

SHOULD YOU WISH TO BID ON THIS LOT, YOU WILL BE REQUIRED TO OBTAIN A HIGH VALUE PADDLE.

Very similar to an emerald parure exhibited in the Louvre and formerly in the collection of Empress Marie-Louise, this emerald and diamond tiara / necklace embodies the elegant, yet simple, style of its period. Highly honored by Marie-Etienne Nitot (1750-1809), founder of the house Chaumet and one of the greatest jewelers of this period, symmetry and precision were in the center of early 19th century jewellery, as one can see in the design of lot 535. Composed of eleven pendants harmoniously graduating towards its center, the tiara / necklace is enhanced by 28 emeralds of high quality underlining the elegance of this jewellery piece.



CENTURIES OF IMPERIAL, ROYAL AND NOBLE PROVENANCE



From top to bottom:

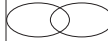
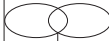
Photo © Pictorial Press Ltd / Alamy Stock Photo
 Photo © Lebrecht Music & Arts / Alamy Stock Photo
 Photo © Heritage Image Partnership Ltd / Alamy Stock Photo
 Photo © Chronicle / Alamy Stock Photo



Alexandre François Marie
Viscount of Beauharnais
(1760-1794)

'Joséphine de Beauharnais'
Empress consort
of the French
(1763-1814)

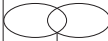
Napoléon Ist Bonaparte
Emperor of the French,
King of Italy
(1769-1821)



Eugène Rose de Beauharnais
French Prince, Prince of Venice,
Duke of Leuchtenberg
(1781- 1824)



Augusta Amalia
Princess of Bavaria,
Duchess of Leuchtenberg
(1788-1851)



Florestine Gabrielle
Princess of Monaco,
Duchess of Urach
(1833-1897)

Friedrich Wilhelm
of Württemberg
Ist Duke of Urach,
Count of Württemberg
(1810-1869)

Théodolinde de Beauharnais
Princess of Leuchtenberg
(1814-1857)



Mathilde Augusta
Princess of Urach,
Countess of Württemberg
(1854-1907)

Paolo Altieri
Prince of Oriolo and Viano
(1849-1901)





THE WÜRTTEMBERG JEWELS

According to history, Lots 536 and 537 once belonged to the royal House of Württemberg.

It is said that Lot 536 was part of the personal collection of Princess Mathilde of Urach (1854-1907), Countess of Württemberg.

Born in 1854, Mathilde was the daughter of Friedrich Wilhelm of Württemberg (1810-1869), 1st Duke of Urach and Count of Württemberg, and Théodolinde de Beauharnais (1814-1857). Through her mother, Mathilde is directly related to Empress Joséphine de Beauharnais (1763-1814) and furthermore to the King of Sweden, Oscar 1st (1799-1859), the Emperor of Brazil, Pedro 1st (1798-1834) and the Emperor Nicholas I of Russia (1796-1855).

Born into the splendours of court life beyond the German Empire, Mathilde would have had countless opportunities to display her jewels at many grand events.

Lot 536 is an impressive composite group of diamond jewellery, comprising a diamond fringe necklace, a diamond pendent brooch and two pairs of earrings, one enhanced by diamonds, the other by natural pearls. Even though not signed by a leading jewellery house, nor designed as a matching parure, each element of this group has been conceived with the same concern for symmetry, scale and mobility, typical of court jewellery of the 19th century.

THE REGAL SPLENDOUR OF THE EUROPEAN COURTS



(reduced size)

+536

THE WÜRTTEMBERG DIAMOND JEWELS IMPRESSIVE 19TH CENTURY SUITE OF DIAMOND AND NATURAL PEARL JEWELLERY

Comprising a fringe necklace, a pendent brooch, two pairs of earrings including one pair with natural pearls
Old and rose-cut diamonds, natural pearls, gold and silver, circa 1890

Size/Dimensions: necklace 34.4 cm; pendent brooch 11.5 cm;
diamond earrings 6.0 cm; pearl earrings 4.8 cm
Gross weight: 121.2 grams

CHF400,000-600,000

PROVENANCE:

Formerly in the Collection of Mathilde of Württemberg, Princess of Urach, Countess of Württemberg (1854-1907), daughter of Théodoline de Beauharnais, Princess of Leuchtenberg (1814-1857), and Wilhelm of Württemberg, Earl of Württemberg, Prince of Urach (1810-1869)
Thence by descent
Geneva, 15 November 2017, lots 338 - 343







Lot 537 partially illustrated, enlarged

THE WÜRTTEMBERG SAPPHIRE JEWELS

Lot 537 is believed to have belonged to her serene Highness Princess Margarete of Urach (1901-1975), Countess of Württemberg.

Born in 1901, in Lichtenstein, Princess Margarete was the daughter of Duke Wilhelm of Urach (1864-1928) and Duchesse Amelia Marie in Bavaria (1865-1912). On her maternal side, Margarete is related to Elizabeth of Austria (1837-1898), better known as 'Sissi', as she is the sister of Margarete's grandfather, Carl-Théodore (1839-1909), Duke of Bavaria. On her paternal side, Margarete is related to Mathilde, Princess of Urach, her aunt, who is believed to have inherited lot 536 from her mother Théodolinde de Beauharnais.

Comprising a floral tiara and matching brooch of forget-me-not and anemones delicately enhanced by oval-shaped sapphires, this demi-parure exhibits a naturalistic design typical of its period. A necklace of later addition completes the demi-parure.

The tiara can be delicately separated into four individual brooches. Each of the four brooches, along with the main one, have been designed "en tremblant", a very popular jewellery technique in the late 18th and 19th century. From the French expression "en tremblant", meaning "trembling", this jewellery technique consists in setting parts of a jewel, usually flowerheads, on small springs. This gives the effect of movement in the jewel when the person wearing it moves.

THE REGAL SPLENDOUR OF THE EUROPEAN COURTS



+537

THE WÜRTTEMBERG SAPPHIRE JEWELS

AN IMPRESSIVE MID 19TH CENTURY SUITE OF SAPPHIRE AND DIAMOND JEWELLERY

Comprising a floral tiara and a brooch, together with an associated necklace
Sapphires of various shapes, rose and old-cut diamonds, silver and gold,
tiara detachable into four separate brooches, 1860s

SSEF, 2023, report no. 128558 (tiara): 7 sapphires, Ceylon,
no indications of heating

**Please refer to the Jewellery department for the additional
gemmological reports.**

Size/Dimensions: tiara 16.0 cm; brooch 11.6 cm; necklace 42.5 cm
Gross weight: 246.6 grams

CHF600,000-1,000,000

PROVENANCE:

Her Serene Highness Princess Margarete of Urach (1901-1975),
Countess of Württemberg, from the Royal House of Württemberg
Geneva, 15 November 2017, lots 344 - 345



PROPERTY OF A GENTLEMAN



+538

ANTIQUE SAPPHIRE AND DIAMOND BROOCH

Oval-shaped sapphire, old-cut diamonds, silver and gold, 1890s,
signed G. Confalonieri, Milano

SSEF, 2023, report no. 127667: Ceylon (Sri Lanka), no indications of heating

Size/Dimensions: 4.1 x 4.6 cm

Gross weight: 30.9 grams

CHF100,000-150,000

PROPERTY FROM A PRIVATE COLLECTOR



+539

ANTIQUÉ EMERALD AND DIAMOND BROOCH

Rectangular-shaped emerald, old-cut diamonds, silver and gold, circa 1880

Please refer to the Jewellery department for the gemmological report.

Size/Dimensions: 8.5 x 3.3 cm

Gross weight: 27.8 grams

CHF150,000-200,000

PROPERTY OF A LADY



+540

VAN CLEEF & ARPELS DIAMOND RING

Marquise brilliant-cut diamond of 21.72 carats, triangular-shaped diamonds, platinum (French mark), signed Van Cleef & Arpels, maker's mark (Ehret, Successeurs), numbered (partially indistinct), grey Van Cleef & Arpels case

GIA, 2023, report no. 5221877561: 21.72 carats, D colour, VVS1 clarity, potentially Internally Flawless

Size/Dimensions: US ring size 6 $\frac{3}{4}$
Gross weight: 16.0 grams

CHF1,100,000-1,500,000

SHOULD YOU WISH TO BID ON THIS LOT, YOU WILL BE REQUIRED TO OBTAIN A HIGH VALUE PADDLE.





AN IMPORTANT COLLECTION
OF JEWELS FROM
A DISTINGUISHED COLLECTOR



+~ 541

MONTURE CARTIER ART DECO NATURAL PEARL, CORAL AND DIAMOND NECKLACE

Thirteen strands of graduated natural pearls ranging from 7.05 to 2.60 mm, two natural pearl drops measuring 9.60 - 10.55 x 13.30 and 8.90 - 10.40 x 14.80 mm, button-shaped brown natural pearl of 10.48 - 11.34 x 9.20 mm, coral drop measuring approximately 113.70 - 13.70 x 20.80 mm, old and rose-cut diamonds, 18k gold (French marks), 1930s, signed Monture Cartier, maker's mark (Cartier, Société Anonyme)

SSEF, 2009, report no. 54591: 2094 natural pearls, saltwater, 1 half natural pearl

Size/Dimensions: 43.0 cm shortest strand
Gross weight: 125.3 grams

CHF80,000-100,000

PROVENANCE:

Formerly in the Collection of Daisy Fellowes
Geneva, 17 November 2009, lot 180

LITERATURE:

S. Papi, A. Rhodes, *Famous Jewellery Collectors*, Thames & Hudson, London, 1999, p. 160
S. Papi, A. Rhodes, *20th Century Jewellery & the Icons of Style*, Thames & Hudson, London, 2013, p. 101

Please note that the report is over five years old and may require an update.

Please note that this lot incorporates material from endangered species which could result in export restrictions.

PROPERTY OF A DISTINGUISHED COLLECTOR

DAISY FELLOWES

Heiress to the Singer sewing machine empire on her mother's side, and a descendent of French aristocracy on her father's, Daisy Fellowes was a trendsetter from the 'Roaring Twenties' through the café-society of the 1930s. An integral part of Mayfair society during the interwar years, her social circle included royalty and moguls, who she entertained on her two yachts in the Mediterranean and at her beach house in Antibes. Known to change outfits multiple times when she hosted, Daisy arguably launched more fashions than any other woman in the world. She was renowned both for her fine clothing and jewels, which she acquired from the leading jewelers and couturiers of her time, including Cartier, Van Cleef & Arpels, Elsa Schiaparelli and Chanel. Daisy married the Honorable Reginald Fellowes, a wealthy banker and cousin of Winston Churchill, after a brief marriage to the Prince de Broglie.

Bought in 1930s, lot 541 is an example of her love for natural pearls and coral.



Photo © Chronicle / Alamy Stock Photo

PROPERTY OF A DISTINGUISHED COLLECTOR





+542

CARTIER ART DECO DIAMOND NECKLACE

Old-cut diamonds, platinum, 1929, signed Cartier, London

Cartier, 2008, no. GE2008-144: Certificate of Authenticity

Size/Dimensions: 52.0 cm

Gross weight: 46.7 grams

CHF100,000-150,000

PROVENANCE:

Christie's, New York, 11 December 2008, sale no. 2016, lot 216



PROPERTY OF A DISTINGUISHED COLLECTOR



(three views)



+543

ART DECO EMERALD AND DIAMOND RING

Rectangular-shape emerald of 8.41 carats, half-moon and baguette-cut diamonds, platinum, circa 1925

SSEF, 2023, report 128456: Colombia, minor oil in fissures
Gübelin, 2009, report no. 0907062: 8.41 carats, Colombia,
minor clarity enhancement

Size/Dimensions: US ring size 6¾
Gross weight: 5.5 grams

CHF200,000-300,000

PROVENANCE:

London, September 2009, lot 150

PROPERTY OF A DISTINGUISHED COLLECTOR



(three views)

+544

COLOURED DIAMOND RING

Fancy yellow circular brilliant-cut diamond of 15.44 carats, white gold and platinum (French marks)

GIA, 2023, report no. 2225889860: 15.44 carats, Fancy Yellow, natural colour, VS1 clarity

Size/Dimensions: US ring size 5¾

Gross weight: 8.0 grams

CHF120,000-180,000





PROPERTY OF A DISTINGUISHED COLLECTOR



+545

**CARTIER ART DECO EMERALD, SAPPHIRE, ONYX AND
DIAMOND PENDANT**

Fluted emerald bead and drops, cabochon sapphires, onyx rondelles,
old and single-cut diamonds, platinum, circa 1925, signed Cartier, numbered

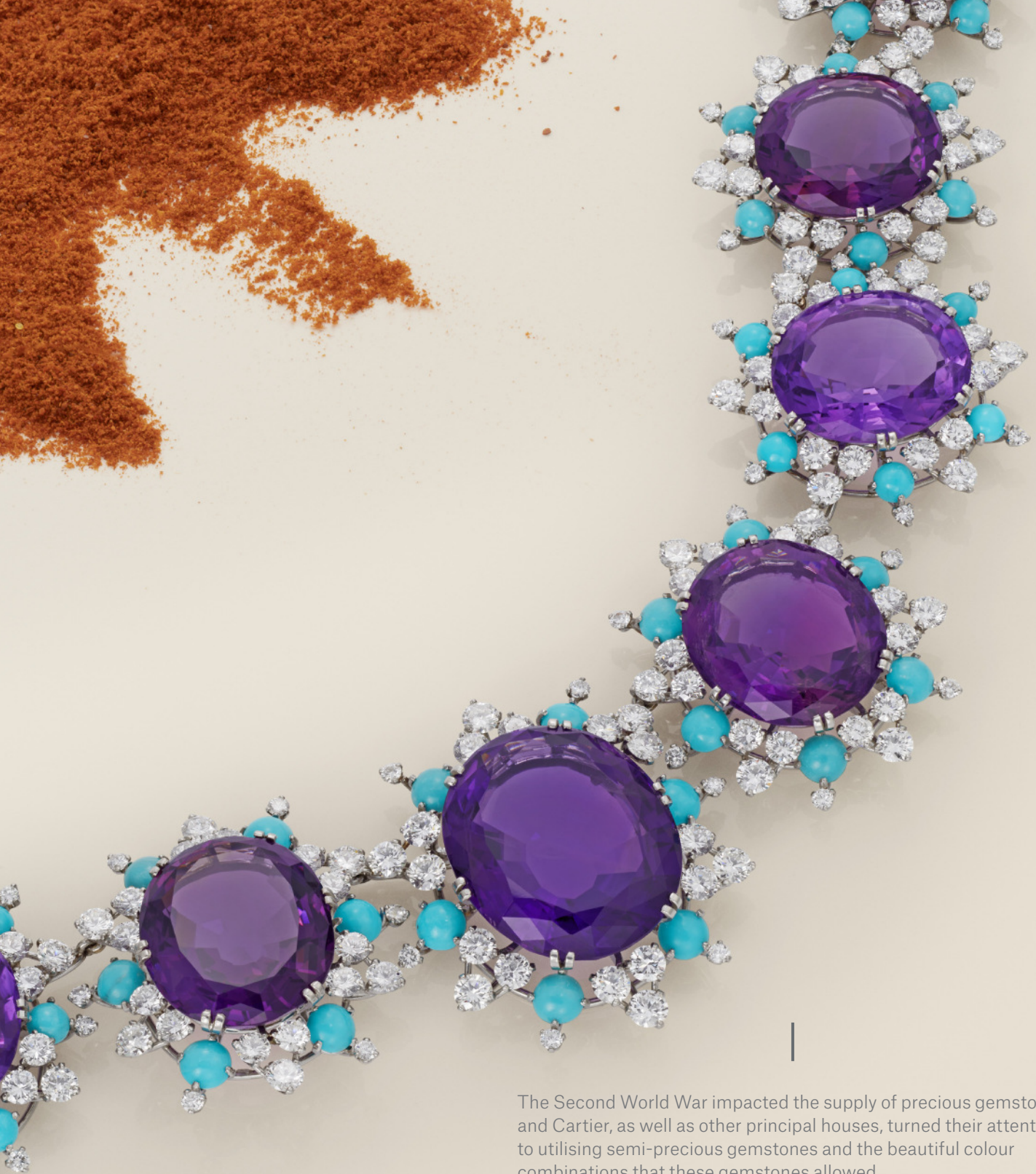
Size/Dimensions: 12.0 cm

Gross weight: 33.9 grams

CHF100,000-150,000

PROVENANCE:

Christie's, London, 10 June 2009, sale 7733, lot 70



The Second World War impacted the supply of precious gemstones and Cartier, as well as other principal houses, turned their attention to utilising semi-precious gemstones and the beautiful colour combinations that these gemstones allowed.

One of the most famous jewels Cartier created in the aftermath of the War was the drapery necklace made for Wallis Simpson in 1947 decorated with turquoise and amethysts – a striking colour combination that can also be seen used here in Lot 546.

PROPERTY OF A DISTINGUISHED COLLECTOR



+546

**IMPRESSIVE CARTIER AMETHYST, TURQUOISE AND DIAMOND
NECKLACE**

Oval-shaped amethysts, round-shaped cabochon turquoise, round diamonds,
1960s, platinum, signed Cartier

Size/Dimensions: 38.0 cm

Gross weight: 187.5 grams

CHF100,000-150,000

PROVENANCE:

Christie's, New York, 15 October 2008, sale 2253, lot 1100

PROPERTY OF A LADY



547

SAPPHIRE AND DIAMOND RING

Oval-shaped sapphire of 25.01 carats, half moon-shaped diamonds

Gübelin, 2023, duplicate of report no. 18120024: 25.01 carats, Sri Lanka (Ceylon), no indications of heating

Size/Dimensions: US ring size approximately 5 (with two sizing beads)
Gross weight: 11.8 grams

CHF170,000-250,000

PROPERTY OF A LADY



+548

REZA SAPPHIRE, RUBY AND DIAMOND NECKLACE

Rectangular-shaped sapphire, baguette and fancy-shaped rubies, baguette and round diamonds, 18k yellow gold (French mark), signed A.Reza, maker's mark

Gübelin, 2022, report no. 22080104: stated weight of 16.07 carats, Burma (Myanmar), no indications of heating, with Information Sheet on Unheated sapphires

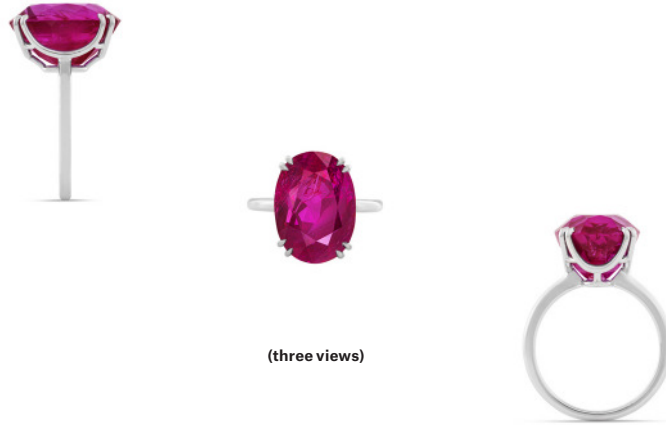
Size/Dimensions: 37.0 cm
Gross weight: 97.1 grams

CHF120,000-180,000

LITERATURE:

Cf. V. Becker, *Alexandre Reza*, Assouline, New York, 2011

PROPERTY OF A LADY



(three views)

+549

RUBY RING

Oval-shaped ruby of 14.46 carats, platinum

Gubelin, 2023, report no. 23020004: 14.46 carats, Burma (Myanmar), no indications of heating, with Information Sheets on Unheated rubies and Rubies from Mogok, Burma

SSEF, 2023, report no. 127026: 14.467 carats, no indications of heating, with Additional information letter

Size/Dimensions: US ring size 6

Gross weight: 7.4 grams

CHF200,000-300,000

“These crystalline (...) inclusions allow the inclusions researcher to piece together the stone’s complex history, like a piece of mosaic”.

- E.J. Gübelin, Photo Atlas





FORMERLY THE PROPERTY OF A ROYAL FAMILY



+550

HARRY WINSTON DIAMOND EARRINGS, WITH ASSOCIATED SAPPHIRE PENDANTS

Marquise and pear-shaped diamonds, 18k white gold and platinum,
maker's mark (Jacques Timey); detachable pendants of later addition
with oval-shaped sapphires of 52.08 and 51.26 carats, platinum

SSEF, 2021, report no. 117112: 52.083 carats, Ceylon (Sri Lanka),
no indications of heating

SSEF, 2018, report no. 103196: 51.260 carats, Ceylon (Sri Lanka),
no indications of heating

Size/Dimensions: clips 2.7 cm; pendants 2.6 cm

Gross weight: 43.8 grams

CHF1,400,000-2,000,000

**Please note that one of these reports is over five years old and may
require an update.**

SHOULD YOU WISH TO BID ON THIS LOT, YOU WILL BE REQUIRED TO
OBTAIN A HIGH VALUE PADDLE.

PANTHÈRE

In the Jewellery world, Panther is synonymous with Cartier. This design is part of the French Maison DNA.

If the first occurrence of the three-dimensional panther motif appeared in 1949 under the artistic direction of Jeanne Toussaint, the first allusions to this majestic animal were present as early as 1914, with a woman's watch strap with a panther's coat in onyx and diamonds.

The most famous jewel of the house representing a panther is undoubtedly the brooch of the Duchess of Windsor, where the panther pavé-set with sapphires and diamonds surmounts an impressive sapphire cabochon from Kashmir weighing 152.35 carats.

Today, Cartier perpetuates the tradition with an eponymous line and allusions to this motif in each High Jewellery collection.



PROPERTY OF A GENTLEMAN



551

**CARTIER SAPPHIRE, EMERALD, DIAMOND AND ONYX
'PANTHÈRE' CLIP-BROOCH**

Designed as a panther with movable head and articulated paws and tail, buff-top sapphires, pear-shaped emeralds, round diamonds, onyx nose, platinum and 18k white gold (French marks), signed Cartier, maker's mark (Cartier Joaillerie Internationale), numbered

Size/Dimensions: 6.4 x 5.2 cm

Gross weight: 81.2 grams

CHF120,000-180,000

LITERATURE:

Cf. F. Cologni, E. Nussbaum, *Platinum by Cartier, Triumphs of the Jeweler's Art*, Milan, Harry N. Abrams, Inc., Publishers, 1996, p. 224

PROPERTY OF A LADY



+552

DIAMOND PENDENT NECKLACE

Pear brilliant-cut diamond of 11.00 carats, marquise-shaped diamonds, platinum and gold, maker's mark

GIA, 2019, report no. 2201400700: 11.00 carats, D colour, VVS2 clarity, Type IIa

Size/Dimensions: 37.5 cm
Gross weight: 27.2 grams

CHF300,000-500,000

PROPERTY OF A LADY



(three views)



+553

VAN CLEEF & ARPELS DIAMOND RING

Round-cornered rectangular brilliant-cut diamond of 6.41 carats,
trapeze-cut diamonds, signed Van Cleef & Arpels

GIA, 2023, report no. 5221839029: 6.41 carats, D colour, VVS2 clarity,
potentially Internally Flawless, excellent polish

Size/Dimensions: US ring size 7 $\frac{3}{4}$
Gross weight: 6.3 grams

CHF300,000-400,000



FORMERLY THE PROPERTY OF A ROYAL FAMILY



+554

HARRY WINSTON SAPPHIRE AND DIAMOND RING

Cushion-shaped sapphire of 16.65 carats, triangular-shaped diamonds, platinum and 18k yellow gold, maker's mark (Jacques Timey)

Gübelin, 2018, report no. 18100103: 16.65 carats, Kashmir, no indications of heating, with Information Sheet on Unheated sapphires and Appendix SSEF, 2018, report no. 102923: 16.655 carats, Kashmir, no indications of heating, with Appendix letter

Size/Dimensions: US ring size 6½
Gross weight: 9.2 grams

CHF1,500,000-1,800,000

Please note that these reports are over five years old and may require updates.

SHOULD YOU WISH TO BID ON THIS LOT, YOU WILL BE REQUIRED TO OBTAIN A HIGH VALUE PADDLE.



+555

BULGARI MULTI-GEM NECKLACE

Drop-shaped emeralds of 9.81 and 9.68 carats, drop-shaped and round emeralds, sapphires and spinels, round diamonds, 18k rose gold, signed Bulgari, numbered, purple Bulgari fitted pouch

Gübelin, 2018, report no. 17120167: 9.81 carats, Zambia, minor clarity enhancement, with Information Sheet on Emeralds from Zambia (Kafubu)

Gübelin, 2018, report no. 17120166: 9.68 carats, Zambia, moderate clarity enhancement

Size/Dimensions: 41.5 cm
Gross weight: 128.4 grams

CHF300,000-500,000

Please note that these reports are over five years old and may require updates.







(three views)

+556

SAPPHIRE AND DIAMOND RING

Cushion-shaped sapphire of 9.23 carats, old-cut diamonds, yellow gold

SSEF, 2023, report no. 126364: 9.236 carats, Kashmir, no indications of heating, with Appendix letter attesting the exceptional qualities of this sapphire

Gübelin, 2023, report no. 23010151: 9.25 carats, Kashmir, no indications of heating

Size/Dimensions: US ring size 7

Gross weight: 6.8 grams

CHF300,000-500,000





+557

EXCEPTIONAL CARTIER ART DECO DIAMOND BRACELET

Emerald-cut diamonds of 6.23, 5.85, 5.03, 4.98, 4.27, 4.26, 3.95, 3.94, 3.73, 3.46, cut-cornered rectangular step-cut diamond of 5.75 carats, square-shaped and baguette-cut diamonds, platinum, 1930s, signed Cartier, London

GIA, 2022, report no. 5221552592: 6.23 carats, E colour, VS1 clarity

GIA, 2022, report no. 2221552535: 5.85 carats, F colour, VS1 clarity

GIA, 2022, report no. 2223552580: 5.75 carats, F colour, VS2 clarity, faint fluorescence

GIA, 2022, report no. 2225552566: 5.03 carats, I colour, VS2 clarity, faint fluorescence

GIA, 2022, report no. 6224552560: 4.98 carats, H colour, VS2 clarity, faint fluorescence

GIA, 2022, report no. 5222552530: 4.27 carats, G colour, VVS2 clarity

GIA, 2022, report no. 2225552503: 4.26 carats, D colour, VS2 clarity

GIA, 2022, report no. 2223552528: 3.95 carats, E colour, SI1 clarity

GIA, 2022, report no. 2221552524: 3.94 carats, G colour, VS2 clarity

GIA, 2022, report no. 5221552555: 3.73 carats, F colour, SI1 clarity

GIA, 2022, report no. 6227552541: 3.46 carats, E colour, VS2 clarity

Size/Dimensions: 17.5 cm

Gross weight: 44.3 grams

CHF1,000,000-1,500,000

SHOULD YOU WISH TO BID ON THIS LOT, YOU WILL BE REQUIRED TO OBTAIN A HIGH VALUE PADDLE.

PROPERTY OF A LADY

“The jewel, which is so well adapted to a woman’s adornment, is a combination of the riches of nature and art; it is a concentrated brilliancy, the quintessence of light.”

C.Blanc, *Art in Ornament and Dress, Personal Adornment*, 1877



+558

RARE CHAUMET RUBY AND DIAMOND RING

Oval-shaped ruby, pear-shaped diamonds, platinum and 18k yellow gold (French marks), Chaumet, Paris (partially indistinct), red Chaumet case

SSEF, 2023, report no. 128339: Burma (Myanmar), no indications of heating

Size/Dimensions: US ring size approximately 6

Gross weight: 13.8 grams

CHF550,000-750,000



PROPERTY OF A PRIVATE COLLECTOR

'THE ROYAL BLUE'



(three views)



+559

'THE ROYAL BLUE'

IMPRESSIVE SAPPHIRE AND DIAMOND RING

Cushion-shaped cabochon sapphire of 28.55 carats, kite-shaped diamonds, platinum

Gübelin, 2023, report no. 23022001: 28.55 carats, Kashmir, no indications of heating, Royal Blue, with Appendix and Information Sheet on Unheated sapphires

SSEF, 2023, report no. 126495: 28.550 carats, Kashmir, no indications of heating, Royal Blue

AGL, 2023, report no. 1129951: 28.55 carats, Kashmir, no heat enhancement and no clarity enhancement

GIA, 2023, report no. 6227725674: 28.55 carats, Kashmir, no indications of heating, Royal Blue

Size/Dimensions: US ring size 5 $\frac{1}{4}$

Gross weight: 13.4 grams

CHF1,200,000-2,200,000

SHOULD YOU WISH TO BID ON THIS LOT, YOU WILL BE REQUIRED TO OBTAIN A HIGH VALUE PADDLE.



PROPERTY OF A LADY OF TITLE



560

DIAMOND RIVIÈRE NECKLACE

Old-cut diamonds, silver and gold, late 19th century composite

Size/Dimensions: 36.0 cm

Gross weight: 32.1 grams

CHF40,000-60,000

PROPERTY OF A LADY



(three views)

+561

DIAMOND RING

Round brilliant-cut diamond of 25.18 carats, round diamonds, yellow gold

GIA, 2023, report no. 5222874688: 25.18 carats, Y to Z colour, SI1 clarity

Size/Dimensions: US ring size 9

Gross weight: 15.3 grams

CHF170,000-250,000




A RARE CARTIER GAMES COMPENDIUM

It is during the Roaring Twenties, when Louis Cartier felt the need to develop and diversify his products, reaching a wider clientele. In this view, the Parisian Maison designed and realized special objects characterised by a useful function and the artistic spirit and elegance of Cartier.

The results being exquisite objects, such as vanity cases, desk-sets, cigarette cases and lighters, decorated with precious materials.

It is with the consequences of the Wall Street Crash of 1929, that the House of Cartier further modified their stock to adapt to the new financial constraints by forming the Department S. They continued creating beautiful objects, incorporating less precious materials such as lacquer, mother-of-pearl, silver and coral.

This rare and exceptional games compendium exemplifies the creative genius of Cartier and its Department S, continuously adapting and developing their style to stay relevant and desirable throughout the highs and lows of the 20th century.







Lot 562 reduced size





Lot 562 reduced size

PROPERTY FROM A DISTINGUISHED PRIVATE COLLECTION



(reduced size)

~+562

CARTIER ART DECO MULTI-GEM GAMES COMPENDIUM

Rectangular black lacquer case decorated in the Chinese taste inlaid with various hardstones, coral and mother-of-pearls representing a naturalistic scene, clasp and hinges of cartouche design applied with engraved mother-of-pearl, braided rope handles to the sides, red leather-lined interior with fitted trays containing coloured mother-of-pearl gaming chips, playing cards, four silver pencils and bridge scoring pads, silver (French marks), circa 1925, Cartier, maker's marks (Maurice Couët), numbered

Size/Dimensions: case 26.0 x 20.0 x 12.0 cm
Gross weight: approximately 9.26 kg

CHF70,000-100,000

PROVENANCE:

Christie's, Geneva, 18 May 1995, sale no. 1191, lot 345

Please note that this lot incorporates material from endangered species which could result in export restrictions.

PROPERTY OF A GENTLEMAN



(two views)

+563

DIAMOND RING

Round brilliant-cut diamond of 6.16 carats, tapered baguette-cut diamonds, 18k white gold

GIA, 2022, report no. 2221597260: 6.16 carats, D colour, VVS2 clarity, excellent polish and symmetry

Size/Dimensions: US ring size 6¾
Gross weight: 7.7 grams

CHF220,000-320,000



+564

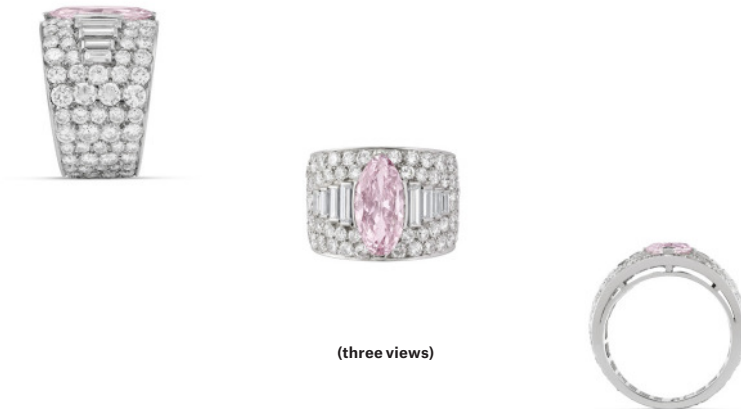
CARTIER ART DECO SAPPHIRE AND DIAMOND BRACELET

Rectangular-shaped sapphires, round, single and baguette-cut diamonds, platinum (French marks), circa 1930, signed Cartier, Paris, numbered

Size/Dimensions: 18.5 cm
Gross weight: 62.7 grams

CHF60,000-80,000

PROPERTY OF AN IMPORTANT EUROPEAN FAMILY



565

**BULGARI COLOURED DIAMOND AND DIAMOND
'TROMBINO' RING**

Fancy purplish pink modified marquise brilliant-cut diamond of 2.12 carats,
baguette-cut and round diamonds, signed Bvlgari (partially erased)

GIA, 2023, report no. 5221802805: 2.12 carats, Fancy Purplish Pink,
natural colour, VVS1 clarity, faint fluorescence, Type IIa

Size/Dimensions: US ring size 6

Gross weight: 14.6 grams

CHF150,000-250,000

PROPERTY OF A GENTLEMAN



(three views)

+566

SAPPHIRE AND DIAMOND RING

Oval-shaped sapphire of 16.08 carats, round diamonds, 18k white gold

SSEF, 2022, report no. 124228: 16.086 carats, Burma (Myanmar),
no indications of heating

Size/Dimensions: US ring size 5¼ (with U-shaped ring sizer)
Gross weight: 23.3 grams

CHF140,000-180,000

PROPERTY OF A LADY

+567

DIAMOND RING

Marquise brilliant-cut diamond of 7.47 carats, platinum

GIA, 2023, report no. 5221819124: 7.47 carats, D colour, VVS1 clarity

Size/Dimensions: US ring size 5 (with U-shaped ring sizer)

Gross weight: 6.8 grams

CHF120,000-180,000



(two views)

+568

PEDERZANI COLOURED DIAMOND AND DIAMOND RING

Fancy yellow cut-cornered rectangular modified brilliant-cut diamond of 10.02 carats, triangular-shaped diamonds, platinum and 18k yellow gold (Italian mark), signed Pederzani, maker's mark, blue Pederzani case

GIA, 2023, report no. 2225817894: 10.02 carats, Fancy Yellow, natural colour, VVS1 clarity

Size/Dimensions: US ring size 5½

Gross weight: 8.9 grams

CHF40,000-60,000



(two views)



(three views)



+569

SAPPHIRE RING

Cushion-shaped sapphire of 12.73 carats, platinum, signed P.P. (Peter Pütz)

SSEF, 2023, report no. 128457: 12.729 carats, Burma (Myanmar),
no indications of heating

Size/Dimensions: US ring size 6½
Gross weight: 46.7 grams

CHF200,000-300,000



(reduced size)

+570

CARTIER RETRO AMETHYST AND DIAMOND SAUTOIR

Rectangular and square-shaped amethysts, old-cut diamonds,
18k and 14k yellow gold, 1950s, signed Cartier, London, maker's mark
(Jacques Cartier), numbered

Size/Dimensions: sautoir 61.0 cm; pendant 5.7 cm

Gross weight: 159.0 grams

CHF80,000-120,000

PROPERTY OF A LADY



(partially illustrated)

571

ANTIQUÉ COLOURED DIAMOND AND DIAMOND BROOCH / CHOKER

Fancy yellow round modified brilliant-cut diamond of 12.49 carats, rose-cut diamonds, silver and yellow gold, circa 1900, wearable as a pendant on a seed pearl and diamond choker

GIA, 2022, report no. 2225631959: 12.49 carats, Fancy Yellow, natural colour, VS1 clarity

Size/Dimensions: brooch 3.6 x 3.6 cm; choker 32.8 cm
Gross weight: 23.7 grams

CHF70,000-120,000

Please note that the pearls have not been tested for natural origin.



Lot 571 enlarged



PROPERTY OF A ROYAL FAMILY



(reduced size)

+572

CHATILA EMERALD AND DIAMOND NECKLACE

Pear-shaped emerald of 65.01 carats, oval-shaped emeralds, oval-shaped and round diamonds, 18k white and yellow gold (Italian marks), pendant detachable, signed Chatila, maker's mark

Gübelin, 2010, report no. 1008056: 65.01 carats, Colombia, minor clarity enhancement
19 GIA report checks, 2007-2010: 3.07 to 1.01 carats, E to H colour, Internally Flawless to VS2 clarity

Size/Dimensions: necklace 37.0 cm; pendant 5.3 cm
Gross weight: 91.4 grams

CHF600,000-800,000

Please note that these reports are over five years old and may require updates.

PROPERTY OF A PRIVATE COLLECTOR

68.00 CARATS BURMA, ROYAL BLUE



•+573

G. BY GLENN SPIRO SAPPHIRE AND DIAMOND RING

Oval-shaped sapphire, fancy-shaped cabochon sapphires, round diamonds, titanium, unsigned

Gübelin, 2023, report no. 23040002: Burma (Myanmar), no indications of heating with Appendix and Information Sheet

SSEF, 2014, report no. 73997: approximately 68.00 carats, Burma (Myanmar), no indications of heating, Royal Blue

Size/Dimensions: US ring size 6¼

Gross weight: 18.9 grams

CHF2,000,000-3,000,000

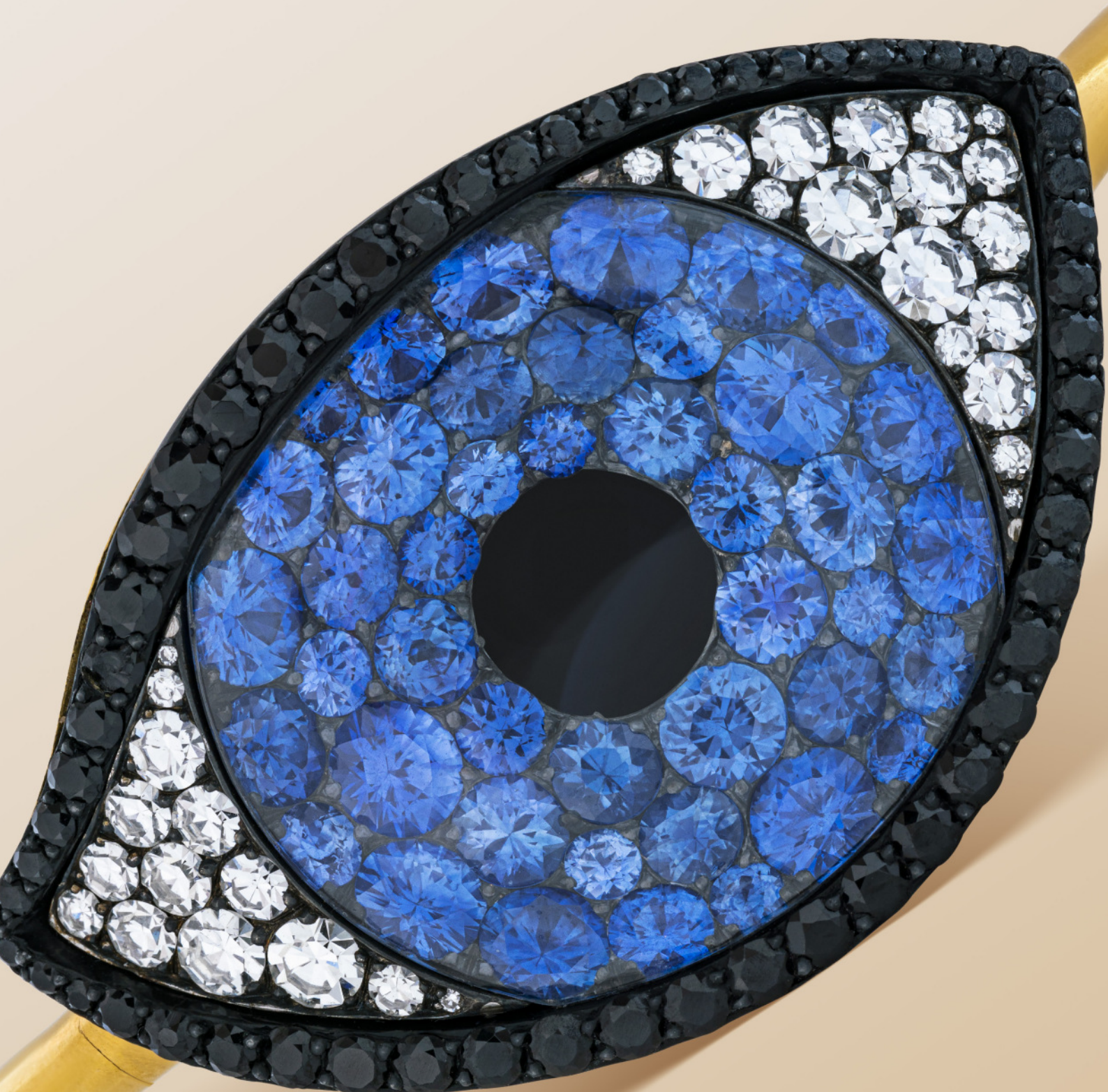
Please note that the SSEF report is over five years old and may require an update.

SHOULD YOU WISH TO BID ON THIS LOT, YOU WILL BE REQUIRED TO OBTAIN A HIGH VALUE PADDLE.

GLENN SPIRO

Starting his career when he was 14, Glenn Spiro opened his first London and Geneva workshops in the 2000s. Heavily inspired by nature, his approach and his gemstones knowledge empower him to combine unusual materials with precious stones, producing unique and magnificently rare jewels.





Lot 593 enlarged



A REFINED EYE FABULOUS JEWELS BY JAR

This collection was built over the past 15 years by an important art and jewels collector who encountered the art of JAR twenty years ago during the important exhibition *The Jewels of JAR*, Paris which took place in London between 2002 and 2003 at Somerset House.

Five years later the collector was in the position to acquire a first jewel by the master of jewellery and after 15 years of collecting the time has come to pass the jewels to JAR enthusiasts around the globe.





Born in New York City in 1943, Joel Rosenthal graduated from Harvard in 1966 before moving to Paris. After a brief period in the film industry and after working with Bulgari in New York, he returned to Paris and in 1977 opened a boutique on Place Vendôme with his partner, Pierre Jeannet; his initials, JAR, are the only source of identification on its façade.

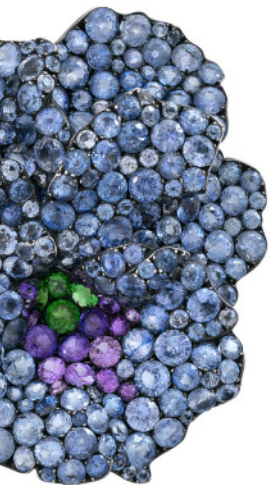
Mr. Rosenthal and Mr. Jeannet operate their shop behind this discrete storefront without advertisement or window display. A rare privilege, few clients have the opportunity to behold the masterpieces that await inside – jewels that pair unusual gemstones with untraditional materials.

JAR's uncanny ability to express creativity through the entire range of the colour spectrum, from the very subtle to the bold, delight the eye. His superior craftsmanship, evocative of the quality of jewels from the 18th and 19th centuries, and his daring sense of proportion are what set him apart from any other.

A jewellery collector's appetite for JAR is never fully satisfied – he keeps the world on the edge of their seats awaiting his next unpredictable design. His jewels are never 'showy'. Indeed, one might say the opposite is true. They are subtle and witty. Like a painter, JAR creates combinations between unlikely stones and metals, bringing glowing contrapuntal colours to life and mirroring nature's world. His ability to incorporate surprising hues and cuts of gemstones creates jewels that have exceptional architectural depth, dynamism and scale.

Irresistibly drawn to his jewellery, his clientele is an assemblage of timeless style icons, tastemakers and fine art collectors, including Ellen Barkin, Jacqueline Delubac, Lily Safra and Elizabeth Taylor. To this day his jewels remain the desire of collectors all over the world.







+574

JAR MULTI-GEM EARRINGS

Round-shaped cabochon chrysoprase, round diamonds, rubies, tourmalines, amethysts and green garnets, 18k yellow and white gold and silver (French marks), signed JAR, Paris

Size/Dimensions: 5.0 cm

Gross weight: 35.1 grams

CHF100,000-150,000





Lot 575 enlarged



+575

JAR COLOURED SAPPHIRE AND DIAMOND 'PAISLEY' EARRINGS

Oval-shaped and round coloured sapphires of various hues, round diamonds, blackened silver and 18k yellow gold, signed JAR, pink JAR case

Size/Dimensions: 4.2 cm

Gross weight: 18.6 grams

CHF100,000-150,000



+576

JAR OPAL, COLOURED ZIRCON AND DIAMOND EARRINGS

Pear-shaped cabochon blue opals, round blue and green zircons, round diamonds, 18k gold and silver, signed JAR, pink JAR case

Size/Dimensions: 5.5 cm

Gross weight: 32.6 grams

CHF150,000-250,000

PROVENANCE:

Christie's, New York, 7 December 2016, sale 12183, lot 216



PROPERTY OF A PRIVATE ART COLLECTOR



(reverse and side)

+577

JAR PETRIFIED PALM WOOD AND DIAMOND EARRINGS

Petrified palm wood hoops, round diamonds, 18k yellow gold and silver (French marks), signed JAR, Paris (partially erased), pink JAR case

Size/Dimensions: 3.7 cm
Gross weight: 55.2 grams

CHF20,000-30,000



+578

JAR WOOD 'GRIFFONS' BOX

Wooden box, yellow gold, unsigned; with a circular 18k yellow gold (French mark) base

Size/Dimensions: 4.7 x 4.6 cm
Gross weight: 80.27 grams

CHF3,000-5,000

PROVENANCE:

Christie's, Paris, 24 November - 9 December 2020, sale 18920, lot 105



+579

JAR NEPHRITE 'GERANIUM' EARRINGS

Carved nephrite leaves, round diamonds, 18k yellow gold (French marks) and blackened silver, signed JAR, Paris, pink JAR case

Size/Dimensions: 5.5 cm
Gross weight: 68.3 grams

CHF20,000-30,000



+580

JAR SPHENE, COLOURED ZIRCON AND DIAMOND EARRINGS

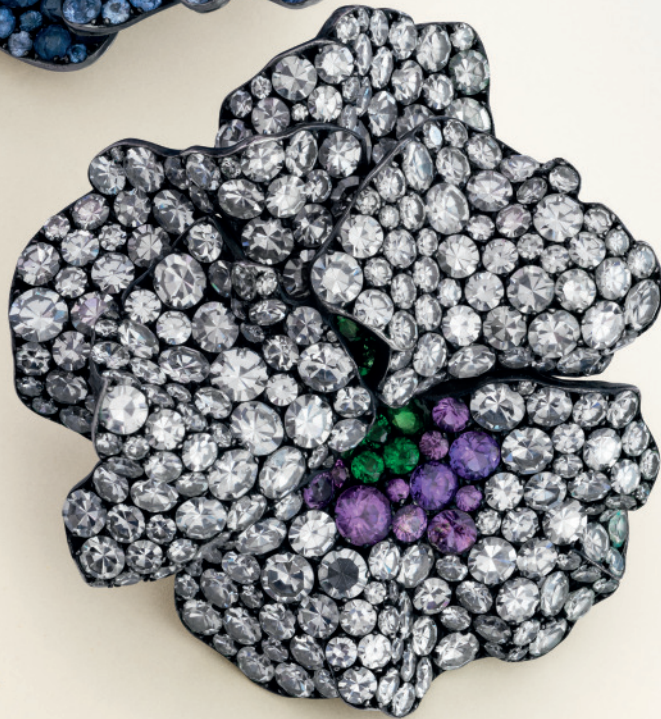
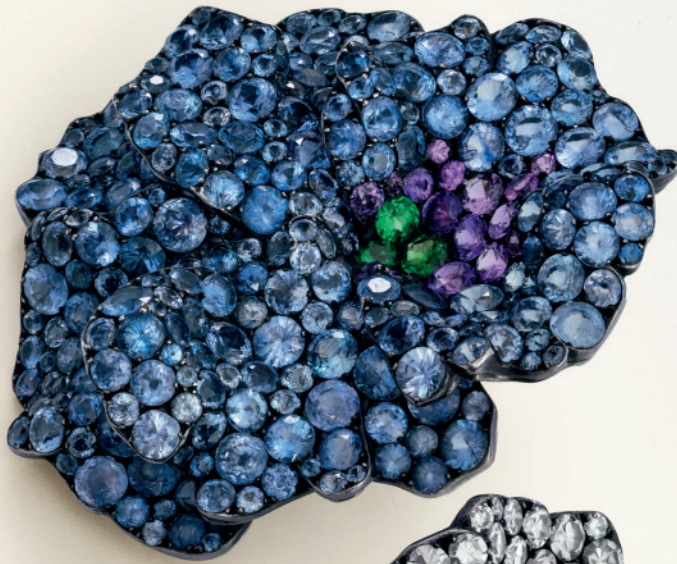
Oval-shaped sphenes, round green zircons and diamonds, gold and silver
(French marks), signed JAR, Paris

Size/Dimensions: 5.1 cm

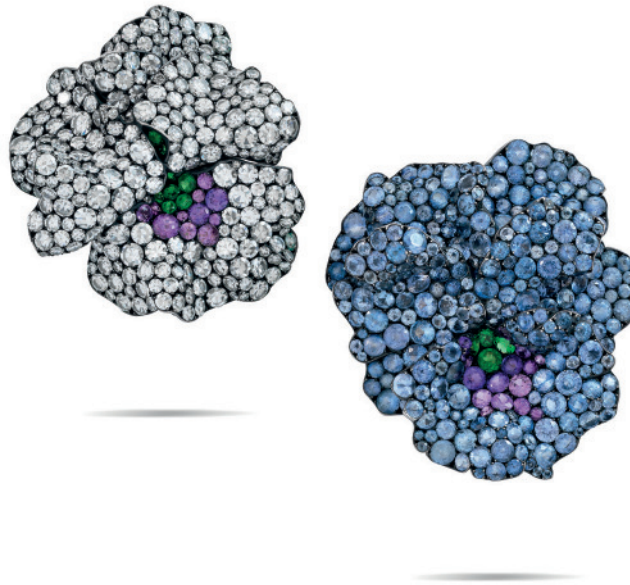
Gross weight: 35.0 grams

CHF150,000-250,000





PROPERTY OF A PRIVATE ART COLLECTOR



+581

JAR MULTI-GEM 'PANSY' EARRINGS

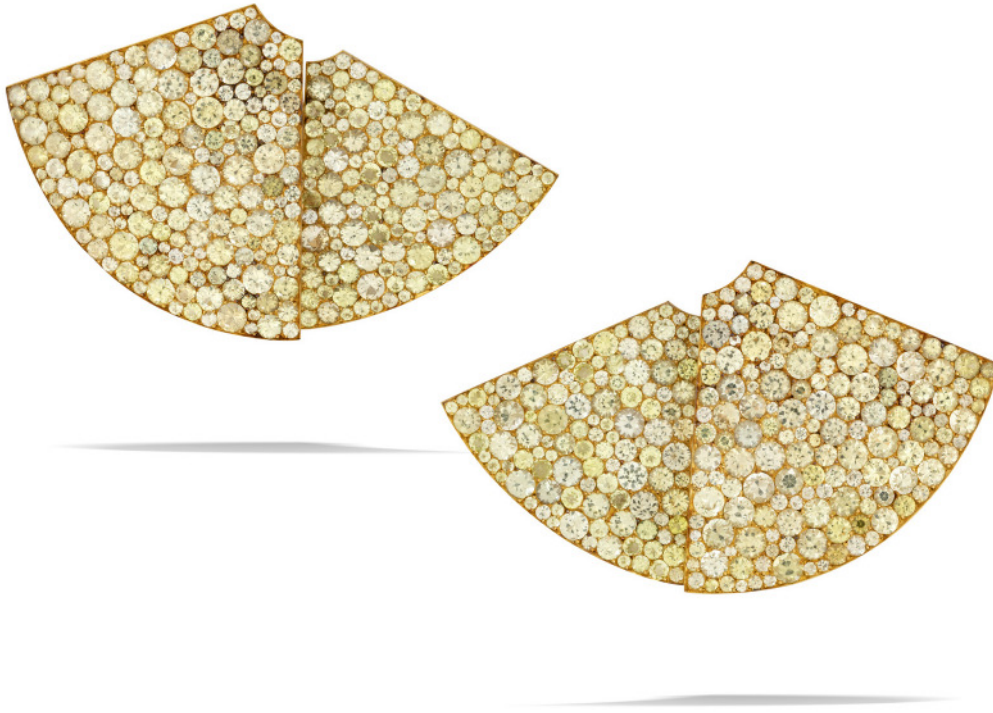
Round sapphires of various hues, amethysts, emeralds and diamonds,
signed JAR, Paris, pink JAR case

Size/Dimensions: 4.2 cm

Gross weight: 50.6 grams

CHF150,000-250,000





+582

JAR CHRYSOBERYL 'FAN' EARRINGS

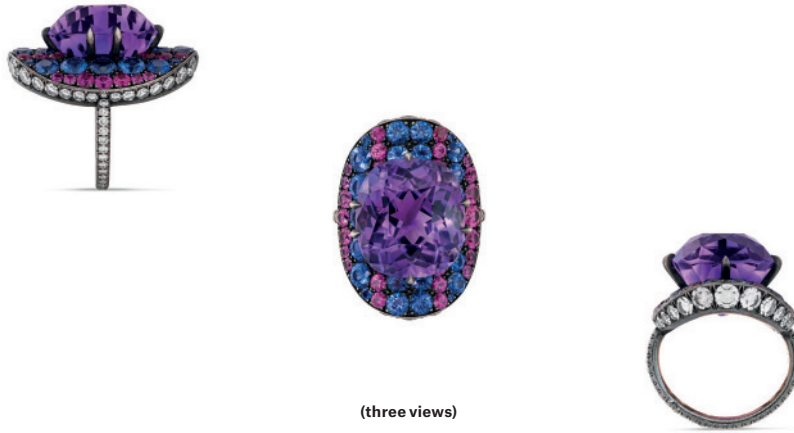
Round chrysoberyl of various hues and diamonds, 18k yellow gold, signed JAR

Size/Dimensions: 4.3 cm

Gross weight: 44.1 grams

CHF100,000-150,000





(three views)

+583

JAR AMETHYST, SAPPHIRE AND RUBY 'BONNET' RING

Cushion-shaped amethyst, round sapphires, rubies and diamonds,
18k gold (French mark), signed JAR, Paris, pink JAR case

Size/Dimensions: US ring size 4

Gross weight: 23.2 grams

CHF70,000-100,000

PROPERTY OF A PRIVATE ART COLLECTOR



+584

JAR AGATE AND GOLD EARRINGS

Moss agate acorns, textured 18k yellow gold (French marks), signed JOUR de JAR, Paris, pink JAR case

Size/Dimensions: 7.5 cm
Gross weight: 56.0 grams

CHF15,000-20,000

PROVENANCE:

Christie's, Geneva, 16 May 2018, sale 16111, lot 303



+.585

JAR GOLD ACORN NECKLACE

18k yellow gold acorn-shaped pendant and chain, unsigned

Size/Dimensions: pendant 1.7 cm; chain approximately 74.0 cm
Gross weight: 14.6 grams

CHF3,000-5,000



+586

JAR COLOURED DIAMOND RING

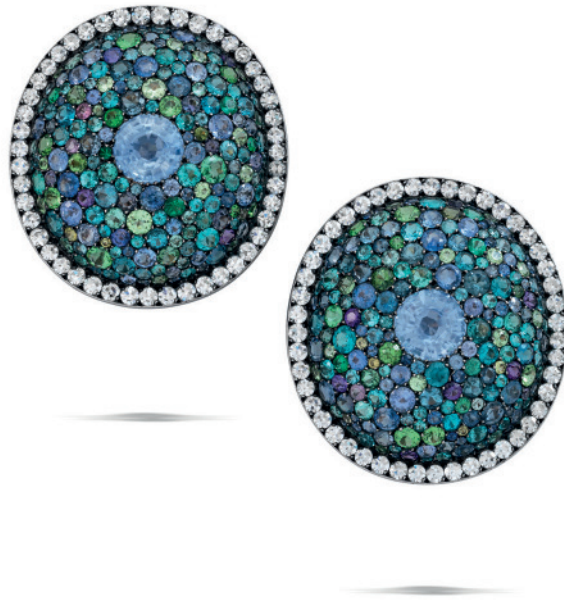
Rectangular-shaped portrait-cut yellow diamond, 18k yellow gold, signed JAR, pink JAR case

Size/Dimensions: US ring size 5 $\frac{1}{4}$

Gross weight: 8.5 grams

CHF20,000-30,000

Please note that the yellow diamond has not been tested for natural colour.



+587

JAR MULTI-GEM 'SHIELD' EARRINGS

Round sapphires, tourmalines, tsavorites and grossular garnets, amethysts, emeralds, peridots and diamonds, 18k gold and silver (French marks), 1992, signed JAR, Paris, pink JAR case

Size/Dimensions: 3.8 cm

Gross weight: 38.4 grams

CHF200,000-300,000

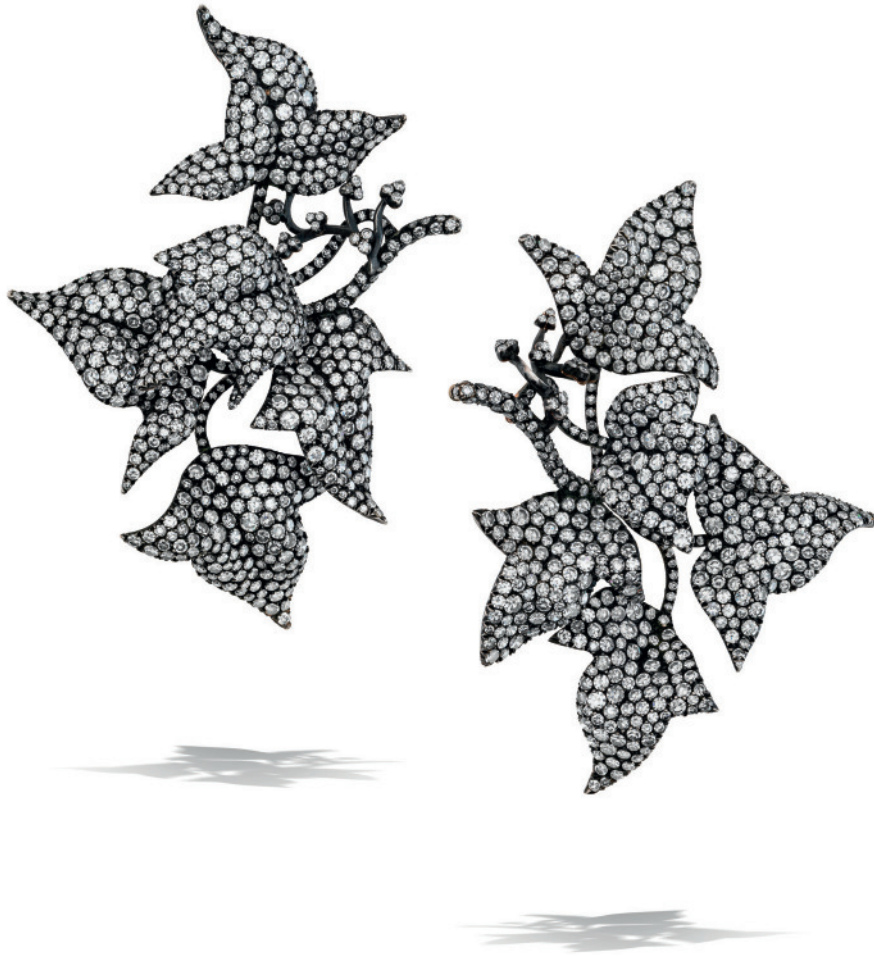
PROVENANCE:

Christie's Geneva, 14 November 2017, sale 14785, lot 473





Lot 588 enlarged



+588

JAR DIAMOND 'IVY LEAVE' EARRINGS

Round diamonds, 18k yellow and rose gold (French marks) and blackened silver, 1991, signed JAR, Paris, pink JAR case

Size/Dimensions: 8.7 cm

Gross weight: 57.0 grams

CHF300,000-500,000

PROVENANCE:

Christie's, Geneva, 13 November 2018, sale 16112, lot 226

EXHIBITED:

London, Somerset House, *The Jewels of JAR, Paris*, no. 359, 2 November 2002
- 26 January 2003

LITERATURE:

JAR II, Paris, JAR and the Metropolitan Museum of Art, 2013, ill. no. 359



+589

JAR ONYX, RUBY AND DIAMOND RING

Onyx intaglio, round rubies and diamonds, platinum and 18k gold, signed JAR, pink JAR pouch

Size/Dimensions: US ring size 6

Gross weight: 8.2 grams

CHF60,000-80,000

PROVENANCE:

Christie's, Paris, 25 May - 26 May 2021, sale 19555, lot 238

Formerly in the Collection of Marion Lambert







+590

JAR TURQUOISE, ZIRCON AND DIAMOND 'BUBBLE' EARRINGS

Oval and round-shaped cabochon turquoises, round blue zircons and diamonds, gold and silver (French marks), signed JAR, Paris, pink JAR case

Size/Dimensions: 5.7 cm
Gross weight: 69.8 grams

CHF80,000-120,000



+591

JAR MULTI-GEM 'CRESCENT' EARRINGS

Round yellow and pink sapphires, fire opals and diamonds, 18k yellow gold (French marks), signed JAR, Paris

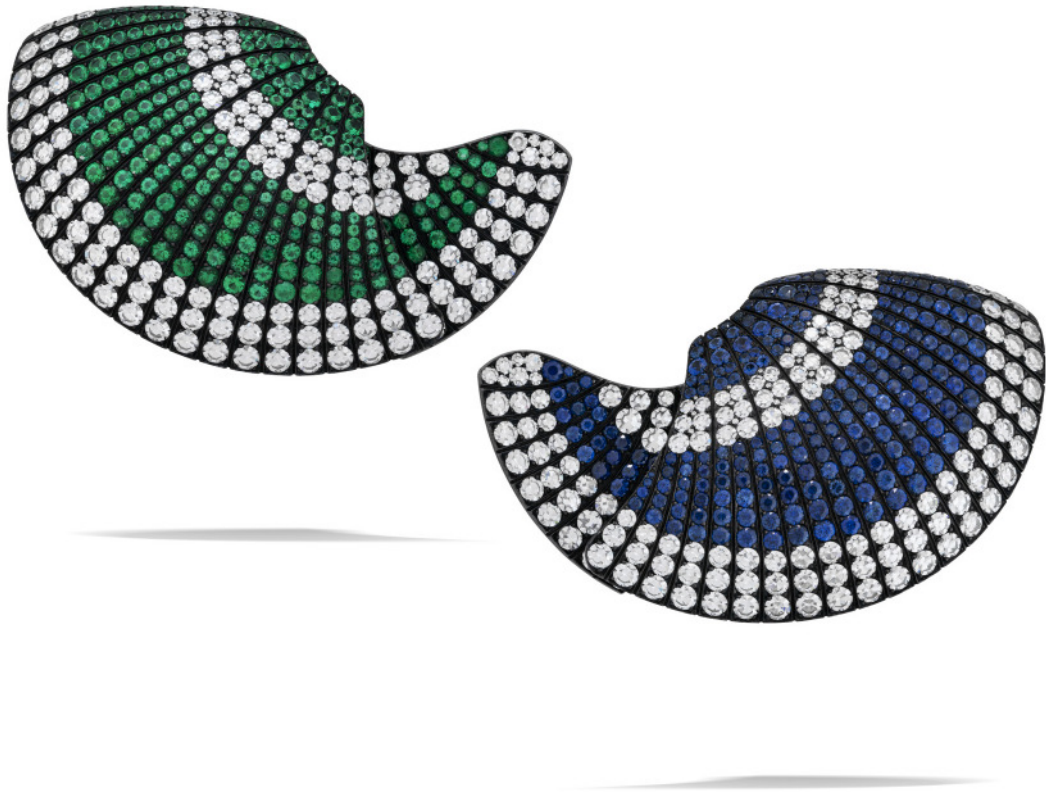
Size/Dimensions: 5.9 cm

Gross weight: 41.6 grams

CHF150,000-250,000







+592

JAR SAPPHIRE, EMERALD AND DIAMOND 'FAN' EARRINGS

Round sapphires, emeralds and diamonds, blackened silver (French marks),
signed JAR, Paris

Size/Dimensions: 4.8 x 7.6 cm

Gross weight: 81.5 grams

CHF400,000-600,000





+593

JAR SAPPHIRE, SPINEL AND DIAMOND 'EYE' BANGLE

Round and old-cut sapphires and spinels, round diamonds, silver and 18k yellow gold (French mark), 2011, signed JAR, Paris

Size/Dimensions: expandable bracelet with resting circumference of 13.0 cm
Gross weight: 40.7 grams

CHF150,000-250,000

LITERATURE:

JAR Paris II, Metropolitan Museum of Art, 2012, ill. no. 192





+594

**JAR COLOURED SAPPHIRE, COLOURED DIAMOND AND
DIAMOND EARRINGS**

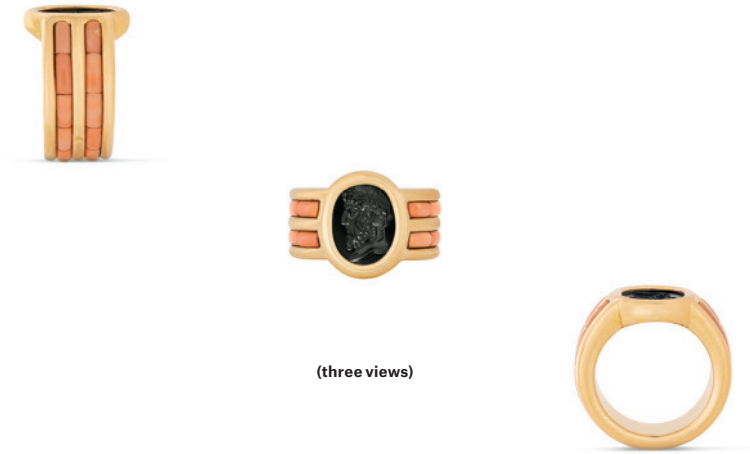
Cushion-shaped yellow sapphires, round grey diamonds and diamonds,
blackened silver and gold, unsigned

Size/Dimensions: 4.8 x 4.8 cm

Gross weight: 58.5 grams

CHF250,000-350,000

PROPERTY OF A PRIVATE ART COLLECTOR



(three views)

~+595

JAR ONYX AND CORAL RING

Onyx intaglio, coral panels, 18k yellow gold (French marks), signed JAR, Paris, pink JAR case

Size/Dimensions: US ring size 5

Gross weight: 16.7 grams

CHF10,000-15,000

Please note that this lot incorporates material from endangered species which could result in export restrictions.

PROPERTY OF A PRIVATE ART COLLECTOR

+596

JAR SAPPHIRE RING

Round-shaped cabochon sapphire, 18k yellow gold (French mark), signed JAR, Paris

Size/Dimensions: US ring size 5¼

Gross weight: 10.6 grams

CHF3,000-5,000



(two views)

+597

JAR DIAMOND RING

Round diamonds, 18k yellow and white gold (French mark), 1978, signed JAR, Paris

Size/Dimensions: US ring size 6

Gross weight: 31.6 grams

CHF20,000-30,000

LITERATURE:

JAR Paris I, Metropolitan Museum of Art, 2012, ill. no. 153



(two views)



+598

JAR MULTI-GEM AND WOOD 'WATERCOLOUR FLOWERS' BROOCH

Designed as a watercolour painting, round diamonds, green garnets, pink and orange sapphires, oak wood, 18k yellow gold (French marks) and silver, signed JAR, Paris, pink JAR case

Size/Dimensions: 8.8 x 8.8 cm

Gross weight: 91.1 grams

CHF150,000-250,000

PROVENANCE:

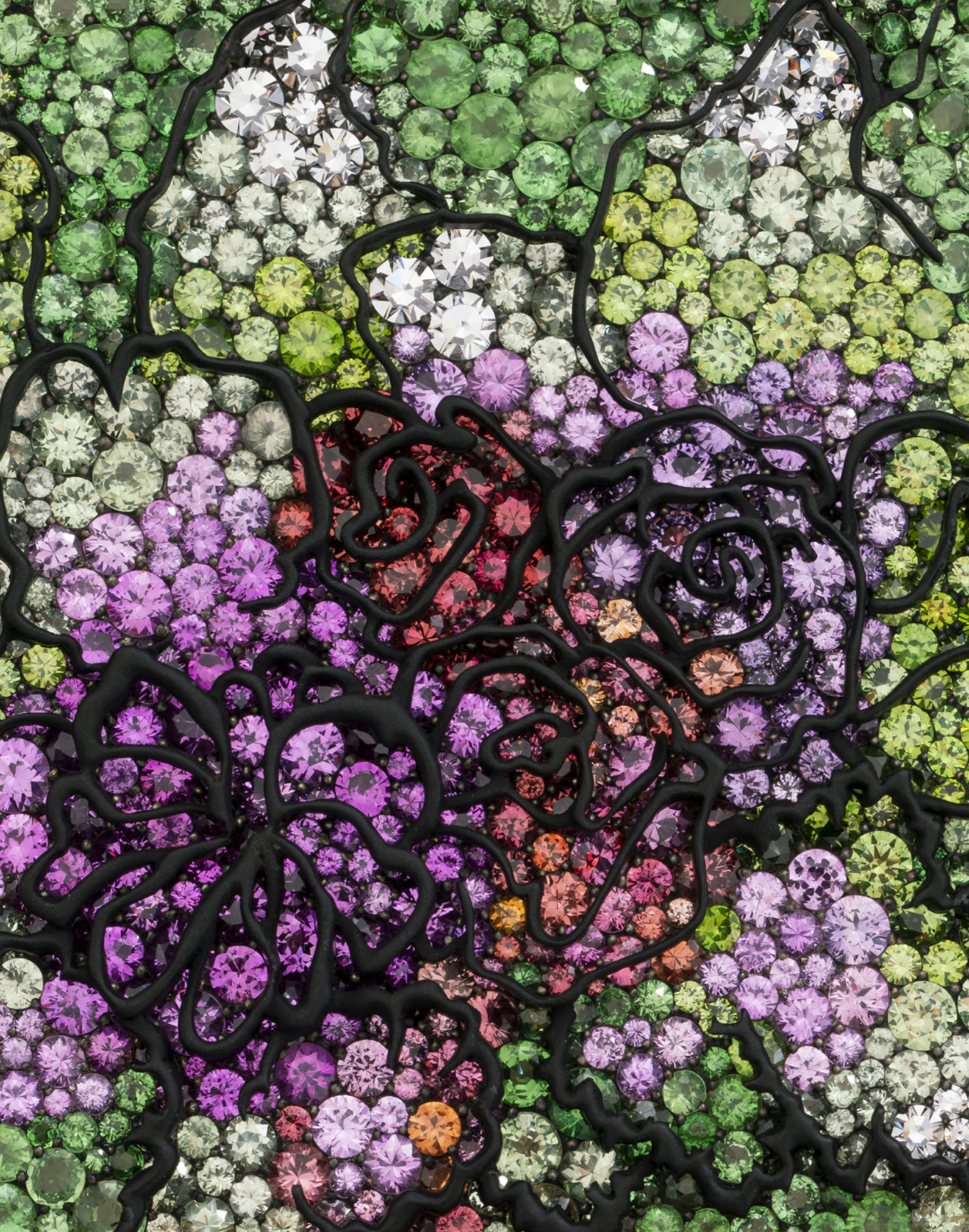
Formerly from the Collection of Norah and Norman Stone
Christie's, New York, 13 April 2022, sale 20951, lot 69

EXHIBITED:

New York, Metropolitan Museum of Art, *Jewels by JAR*,
20 November 2013 - 9 March 2014

LITERATURE:

JAR Paris II, Metropolitan Museum of Art, 2012, no. 291



PROPERTY OF A PRIVATE ART COLLECTOR



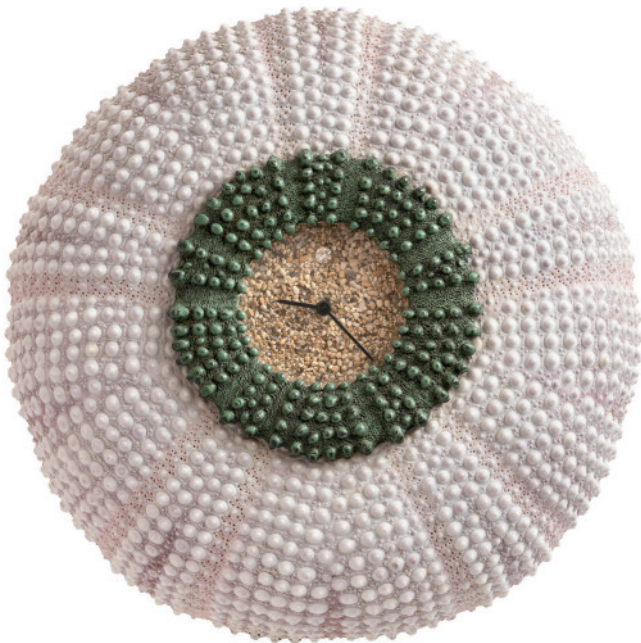
+599

JAR STEEL AND DIAMOND DESK CLOCK

Designed as a sea urchin, round diamond, sand, blackened steel and silver (French mark), signed Jours de JAR, Paris, numbered, with a circular blackened steel support

Size/Dimensions: case width 22.0 mm; 7.6 x 6.6 x 3.9 cm
Gross weight: 484.9 grams

CHF15,000-20,000



+600

JAR SEA URCHIN AND DIAMOND DESK CLOCK

Sea urchin, round diamond, sand, bronze and silver (French mark), signed Jours de JAR, Paris, numbered, with a circular bronze support

Size/Dimensions: case width 31.5 mm; 8.5 x 8.7 x 4.9 cm
Gross weight: 340.8 grams

CHF20,000-30,000







+601

JAR PAIR OF TOURMALINE, AGATE AND DIAMOND 'CAMELIA' BROOCHES

Pink tourmaline and white agate petals, round diamonds, platinum and 18k white gold (French marks), 1985, unsigned, pink JAR fitted case

Size/Dimensions: 6.5 cm
Gross weight: 143.1 grams

CHF300,000-500,000

PROVENANCE:

Christie's, Geneva, 13 May 2015, sale 1409, lot 270

EXHIBITED:

Jewels by JAR, Metropolitan Museum of Art, New York, November 2013 - March 2014, no.22

LITERATURE:

JAR I, Exhibition at Somerset House, London, November 2002-January 2003, ill. no. 270

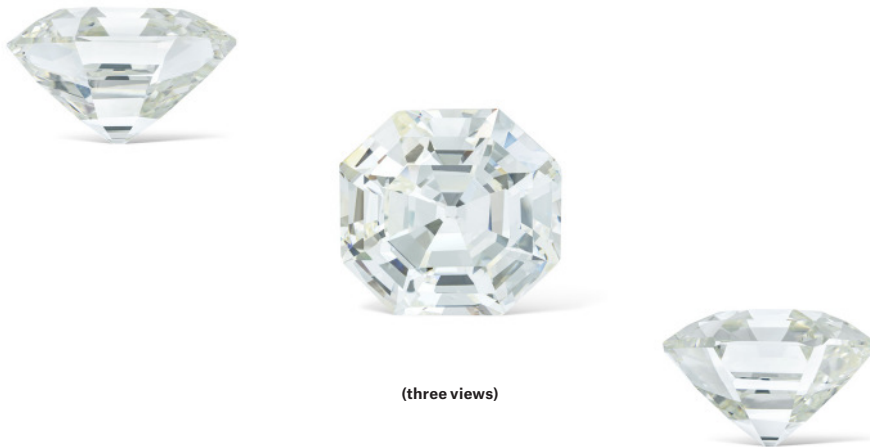


THE STAR OF EGYPT





Lot 602 enlarged



(three views)

602

'THE STAR OF EGYPT'

SPECTACULAR UNMOUNTED DIAMOND

Cut-cornered rectangular step cut diamond of 105.52 carats

GIA, 2020, report no. 5212238017: 105.52 carats, L colour, VS2 clarity, faint fluorescence, with GIA Monograph

Size/Dimensions: 29.86 x 27.92 x 17.61 mm

Gross weight: 21.1 grams

CHF2,000,000-3,000,000

SHOULD YOU WISH TO BID ON THIS LOT, YOU WILL BE REQUIRED TO OBTAIN A HIGH VALUE PADDLE.

THE STAR OF EGYPT

“The 105.52 ct Star of Egypt is undoubtedly a prized gem of beauty, impressive size, and fascinating history. Generating a feeling of magical exhilaration that cannot be replicated, this diamond shares its light like glowing stardust in the sky. Its timeless beauty is not only seen but felt within.”

GIA monograph, The Star of Egypt



INDEX

B

Boivin, R. 525
Boucheron 514
Bulgari 503, 523, 555, 565

C

Cartier 502, 504, 505, 507, 508, 524, 529, 532, 541,
542, 545, 546, 551, 557, 562, 564, 570
Chaumet 528, 533, 534, 558
Chatila 572

G

G. by Glenn Spiro 573

J

JAR 522, 574 - 601

K

Kern 509

M

Mellerio 513

P

Pederzani 568

R

Reza 548

V

Van Cleef & Arpels 501, 512, 516, 517, 518, 519, 540,
553

W

Winston, H. 510, 550, 554



IDENTITY VERIFICATION

From January 2020, new anti-money laundering regulations require Christie's and other art businesses to verify the identity of all clients. To register as a new client, you will need to provide the following documents, or if you are an existing client, you will be prompted to provide any outstanding documents the next time you transact.

Private individuals:

- A copy of your passport or other government-issued photo ID
- Proof of your residential address (such as a bank statement or utility bill) dated within the last three months

Please upload your documents through your christies.com account: click 'My Account' followed by 'Complete Profile'. You can also email your documents to info@christies.com or provide them in person.

Organisations:

- Formal documents showing the company's incorporation, its registered office and business address, and its officers, members and ultimate beneficial owners
- A passport or other government-issued photo ID for each authorised user

Please email your documents to info@christies.com or provide them in person.

CHRISTIE'S

BIOGRAPHIES

RENÉ BOIVIN

René Boivin was born in February 1864 in Paris. An excellent designer and engraver, he began a career in the jewellery field at a young age. During the 1890s he purchased several workshops and established himself at rue St. Anastase. In 1893 he married Jeanne Poret, sister of the famous couturier Jean Poret. They worked together to create some of the most bold and daring fashions of the early 1900s. After Boivin's death in 1917, Jeanne decided to assume control of the firm and established herself in the avenue de l'Opéra alongside her daughter Germaine Boivin, and designer Juliette Moutard. The three worked together for forty years, joined between 1921 and 1932 by Suzanne Belperron, creating such signature pieces as the Starfish (1936). Their jewels, inspired by animals and nature, became well-known. Upon Jeanne Boivin's death in 1959, the house was taken over by Louis Girard. In April 1991, the company became part of the Asprey Group. The brand was recently purchased by a new company.

BOUCHERON

Frédéric Boucheron opened his first jewellery salon at the Palais Royal in 1858, and soon acquired fame as an expert in precious stones, a masterful technician and a creator of beautiful jewellery. In 1893 he became the first jeweller to move to Place Vendôme, where he continued to serve the social elite, and from where the firm still operates successfully today. Over the years, Boucheron opened branches from Moscow and London, to Japan and the Middle and Far East. Boucheron exhibited in many international expositions, including the 1876 Philadelphia Centennial, the 1889 and 1900 World Fairs in Paris, the 1893 World's Columbian Exposition in Chicago and the 1925 International Exhibition of Modern Decorative and Industrial Arts in Paris. Boucheron was acquired in May 2000 by Kering, one of the world's leading multi-brand luxury goods company.

BULGARI

The firm was founded by Sotirio Bulgari, who was born in 1857 in Greece and was descended from a family of silversmiths. In 1884 he opened his first shop in Rome on the Via Sistina, and then in 1905 he moved to the Via dei Condotti. Upon Sotirio's death in 1932 his sons, Giorgio and Costantino, took over the business. They are credited with creating the highly distinctive 'Bulgari' style, inspired by Greek and Roman classicism, the Italian Renaissance, and the 19th century Roman school of goldsmiths. The 1970s marked the beginning of Bulgari's international expansion with the opening of stores in New York (the first overseas), Paris, Geneva and Monte Carlo. It was also in this decade that Bulgari introduced the 'Bulgari-Bulgari' which was to become a successful watch classic. Bulgari Time was established in the early 1980s in Neuchâtel, Switzerland, for the creation and production of all Bulgari watch lines. In 2001, Bulgari formed a joint venture with 'Luxury Group' to create a new luxury hotel brand, Bulgari Hotels & Resorts. In 2011, Bulgari was acquired by LVMH

CARTIER

Cartier was founded in Paris in 1847 by Louis-François Cartier. It was his three grandsons, Louis, Pierre and Jacques, who were responsible for establishing the famous world-wide empire. Louis retained responsibility for the Paris branch, moving it to the rue de la Paix in 1899. Jacques took charge of the London operation in 1906, which had opened in 1902, eventually moving it to the current location on New Bond Street. Pierre established the New York branch in 1909, relocating it in 1917 to the current location at 653 Fifth Avenue. Branches were opened in Moscow and the Persian Gulf in 1910, followed by openings in Cannes and Monte Carlo. In 1964, following the death of Pierre, Cartier Paris, London and New York were sold by the family. Cartier Paris was purchased by two American investors. In 1972 Silver Match lighter owner Robert Hogg and a group of investors led by financier Joseph Kanoui purchased Cartier Paris, followed by Cartier London in 1974 and Cartier New York. In 1976, reuniting the three original branches. The Cartier Collection was created in 1983, allowing Cartier to hold successful public exhibitions of vintage Cartier jewels, clocks and objects in museums around the world. Today, Cartier is part of the Richemont group, with more than 200 boutiques around the world.

CHAUMET

Chaumet was founded in 1780 by Marie-Etienne Nitot who, with his son, Francois Regnault Nitot, became the official jeweller to Napoleon during the Consulate and the Empire. Among their achievements were the Consular sword, the tiara of Pius VII and the grand parures ordered by the Empresses Josephine and Marie-Louise. After the fall of Napoleon, the business continued under the direction of Jean-Baptiste Fossin and his son, Jules, both artists, who succeeded in capturing the spirit of Romanticism in jewellery just as Nitot & Fils had done for the Empire. In 1848, Jules Fossin set up a London branch in partnership with J.V. Morel, who was assisted by his son, Prosper. On his return to Paris in 1854, Prosper Morel joined Jules Fossin, whom he succeeded in 1868. Prosper Morel's daughter married Joseph Chaumet in 1875. Chaumet had begun his jewellery career at the age of fifteen, working in his parents' jewellery shop in Bordeaux. Upon moving to Paris, he was hired by his future father-in-law. By 1885, he assumed management of the firm. In 1889, Chaumet took over the company, simultaneously changing the name. Under his direction, the firm won prizes at all of the international exhibitions and supplied jewellery to many of the Royal houses of Europe. In 1907 he moved the company to 12, Place Vendôme. He also opened boutiques in London in 1905, and in New York in the 1920s. The latter closed in 1934 due to the Depression. In 1999 the firm was acquired by the luxury group LVMH.

CHATILA

Founded in 1860, Chatila remained a family business under the direct management of the founder's grandchildren. Chatila's jewellery is designed in Italy and Paris and handcrafted by their experienced craftsmen. Their showrooms are located on Rue du Rhône in Geneva, Old Bond Street in London and Madison Avenue in New York.

JAR

After graduating from Harvard in 1965, Joel Arthur Rosenthal moved to Paris and started with his partner Pierre Jeannot a tiny boutique on rue de l'Université, creating needlepoint art with wool threads of unexpected colors, a niche endeavor which earned him early fame. Subsequently he applied the same artisanal spirit to jewelry, and opened a salon with Jeannot in Place Vendôme named JAR after his initials. Shy by nature, he lives an almost anonymous existence in the creative universe of his atelier, for a most exclusive clientele, producing only 70-80 pieces a year. He is admired for his sculptural work, inseparable from that ingenious pave work, juxtaposing stones with the sense of color that is his alone. There has been three solo exhibitions: in 1987 at the National Academy of Design in New York, at Somerset House in London in 2002, and in November 2013 at the Metropolitan Museum of Art in New York. The last exhibition was an important salute to Rosenthal's talents, as he was the first living jewelry designer to be accorded a dedicated retrospective in the history of the Met.

RENE KERN

The jeweller René Kern was founded in 1948. It is located in the well-known shopping street of Düsseldorf, the Königsallee, at number 26. They are well-known in Germany for their high quality jewellery, as well as their extensive selection of luxury watches. Their innovative designs earned them a "Diamond International Award" in New York. Today, they belong to the Douglas Holding AG in Hagen.

MELLERIO DITS MELLER

The Mellerio family traces its beginnings in jewellery and goldsmithing to early in the 16th century in the Lombardy region of Italy. Some of its members moved to Paris in 1515, where they prospered and became royal jewellers for Louis XIII in 1635, and were given the privilege of using Meller as their name. The revolutions of 1789 and 1848 interrupted their business temporarily, the latter resulting in an opportunity to open a jewellery business in Madrid, where they became jewellers to Queen Isabel II. Re-established in Paris, they participated in many international expositions, including London in 1862, Paris in 1867, 1878 and 1900, and Vienna in 1873. The twentieth century saw the firm exhibiting in the 1925 Expositions des Arts Décoratifs in Paris and the 1939 World's Fair in New York. They are currently located at 9 rue de la Paix in Paris

PEDERZANI

Pederzani was founded in the 1950s on via Montenapoleone in Milan by Gino Pederzani. His two sons, Alberto and Claudio, soon joined the family business, followed by grandson Alberto jr., who now runs the firm. Well-known in Italy and internationally their haute joaillerie, the Pederzanis were famous for being the first to import heart-shaped diamonds into Italy. They also represented the jeweller Frascaro, selling his iconic animal jewellery until Frascaro's death in July 1976.

ALEXANDRE REZA

Born in Moscow, of ancient Samarkand heritage, Alexandre Reza, who retired in 1995, grew up in Nice, France. In the late 1930s he apprenticed in his father's jewelry shop and developed a lifelong passion for gemstones. After World War II, he founded the eponymous company that would soon become a supplier of rare gemstones and finished jewelry to many of the world's master jewelers. Reza began to design jewelry in the 1960s and opened his own workshop on Place Vendôme in Paris, in the late 1970s, focusing his characteristic style on capturing the beauty and brilliance of the stones. In 1985, Alexandre Reza opened a salon on the Place Vendôme, and, subsequently, salons in Geneva, Monte Carlo, and Cannes. Alexandre Reza's legacy remains vibrant into the 21st century, led by his family on Place Vendôme.

VAN CLEEF & ARPELS

The history of the famous Parisian jewellery house began in 1896 with the marriage of Estelle Arpels to Alfred Van Cleef. The company was founded in 1906 by Alfred and his brother-in law, Charles Arpels at 22, Place Vendôme. Julien Arpels joined the family business in 1908, and Louis Arpels in 1913. The oldest son of Julien Arpels, Claude, joined in 1932, followed by his brothers Jacques and Pierre in 1936 and 1944. An American boutique was opened by Claude in Rockefeller Center in New York in 1939, soon relocating to its definitive address at 744 Fifth Avenue. The 1930s saw some of the company's most iconic designs: the house's arguable trademark, the Mystery Setting - where the mounting of the gemstones is cleverly hidden behind the continuous calibré-cut ruby and sapphire surface of the jewel - was invented in 1933; and the concept of the Minaudière, made in honour of Florence Jay Gould, was invented in 1930 by Charles Arpels. In the following decades, the firm upheld its reputation for innovation with the zip necklace of the 1950s and the Alhambra theme of the 1970s. Today, Van Cleef & Arpels is part of the Richemont Group with more than 45 boutiques around the world.

HARRY WINSTON

Harry Winston (1896-1978) bought his first emerald at the age of eight. By the age of 24 he founded his first business in New York City: the Premier Diamond Company. In 1932 he incorporated under his own name and shortly thereafter began to manufacture and retail jewelry. Proclaimed the King of Diamonds in 1947 by Cosmopolitan magazine, Harry Winston owned at one time or another as many as a third of the famous diamonds in the world. He was also responsible for donating perhaps the most famous of all diamonds, the Hope diamond to the Smithsonian Institution where it stands to today as the centerpiece of the United States' national gem collection. Upon Mr. Winston's death in 1978, his son Ronald assumed control of the company and in 2004 Aber Diamond Corporation acquired a controlling interest in the company taking it public in 2007 under the name Harry Winston Diamond Corporation. In 2013 the Swatch Group acquired the retail arm of Harry Winston while the mining group under separate ownership is now the Dominion Diamond Corporation. Today, Harry Winston retail salons located throughout the US, Europe and Asia.

CONVERSION CHART

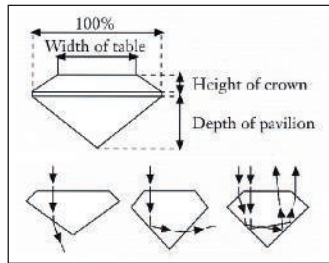
Ring Size

Measurements

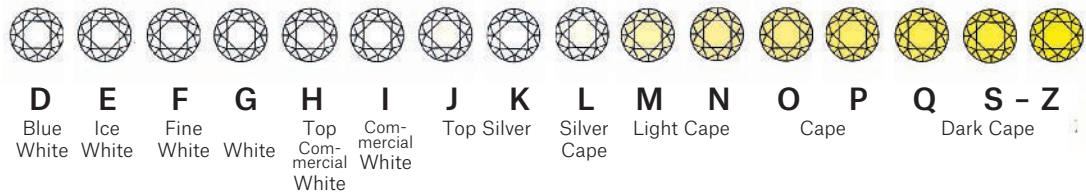
AMERICAN	FRENCH/JAPANESE	ENGLISH	METRIC	INCHES	CM
1/2	—	A	37.8252		
3/4	—	A 1/2	38.4237		
1	—	B	39.0222	—	1
1 1/4	—	B 1/2	39.6207		
1 1/2	—	C	40.2192		2
1 3/4	—	C 1/2	40.8177		
2	1	D	41.4162	1	3
2 1/4	2	D 1/2	42.0147		
2 1/2	—	E	42.6132		
2 3/4	3	E 1/2	43.2117	—	4
3	4	F	43.8102		
3 1/4	—	F 1/2	44.4087		
3 1/2	5	G	45.0072	2	5
3 3/4	—	G 1/2	45.6057		
4	6	H	46.2042		
4 1/4	—	H 1/2	46.8027	—	6
4 1/2	7	I	47.4012		
4 3/4	8	I 1/2	47.9997		7
5	—	J	48.5982		
5 1/4	9	J 1/2	49.1967	3	8
5 1/2	10	K	49.7952		
5 3/4	—	K 1/2	50.3937		
6	11	L	50.9922	—	9
6 1/4	—	L 1/2	51.5907		
6 1/2	12	M	52.1892		
6 3/4	13	M 1/2	52.7877	4	10
7	—	N	53.4660		
7 1/4	14	N 1/2	54.1044		
7 1/2	15	O	54.7428	—	11
7 3/4	—	O 1/2	55.3812		
8	16	P	56.0196		12
8 1/4	—	P 1/2	56.6580		
8 1/2	17	Q	57.2964	5	13
8 3/4	18	Q 1/2	57.9348		
9	—	R	58.5732		
9 1/4	19	R 1/2	59.2116	—	14
9 1/2	20	S	59.8500		
9 3/4	—	S 1/2	60.4884		
10	21	T	61.1268	6	15
10 1/4	22	T 1/2	61.7652		
10 1/2	23	U	62.4026		
10 3/4	24	U 1/2	63.0420	—	16
11	—	V	63.6804		
11 1/4	25	V 1/2	64.3188		17
11 1/2	—	W	64.8774		
11 3/4	26	W 1/2	65.4759	7	18
12	—	X	66.0744		
12 1/4	—	X 1/2	66.6729		
12 1/2	—	Y	67.2714		
	—	Y 1/2	67.8699		
	—	Z	68.4684		

DIAMONDS • THE 4 C'S

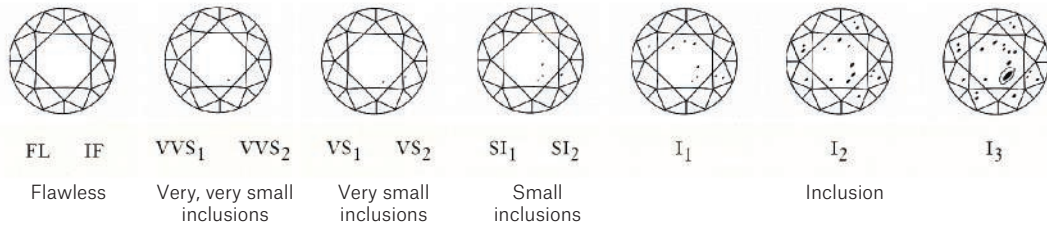
Cut



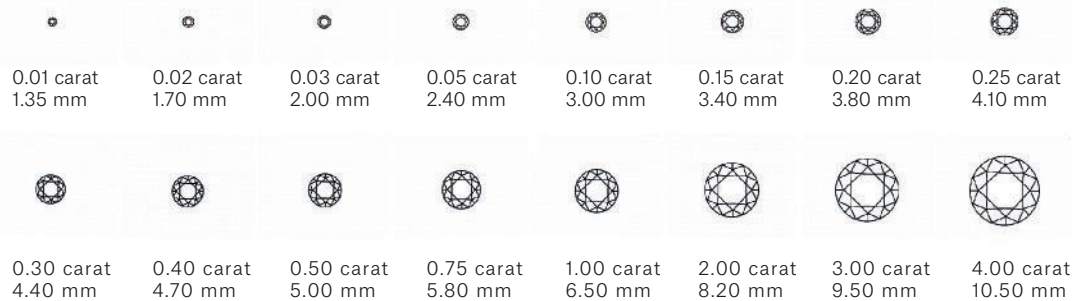
Colour (G.I.A.)



Clarity (G.I.A.)



Carat



Courtesy of Jewellers Network, the Southern African Jewellery Trade Directory, from information supplied by De Beers.
www.jewellersnetwork.co.za

COLOURLESS DIAMOND INDEX

LOT	WEIGHT	COLOUR	CLARITY	CUT
540	21.72	D	VVS1	Marquise
510	8.56	D	VVS1	Marquise
567	7.47	D	VVS1	Marquise
552	11.00	D	VVS2, Type IIa	Pear
553	6.41	D	VVS2	Rectangular
563	6.16	D	VVS2	Round
602	105.52	L	VS2	Rectangular
561	25.18	Y to Z	SI1	Round

COLOURED DIAMOND INDEX

LOT	WEIGHT	COLOUR	CLARITY	CUT
565	2.12	Fancy Purplish Pink	VVS1, Type IIa	Marquise
514	10.89	Fancy Yellow	Internally Flawless	Rectangular
506	10.10	Fancy Yellow	VVS1	Rectangular
568	10.02	Fancy Yellow	VVS1	Rectangular
544	15.44	Fancy Yellow	VS1	Round
571	12.49	Fancy Yellow	VS1	Round

* declared weight

COLOURED STONE INDEX

SAPPHIRE

LOT	WEIGHT	ORIGIN	TREATMENT	CUT
559	28.55	Kashmir, Royal Blue	None	Cabochon
554	16.65	Kashmir	None	Cushion
556	9.23	Kashmir	None	Cushion
573	68.00*	Burma, Royal Blue	None	Oval
516	26.50	Burma	None	Oval
548	16.07*	Burma	None	Rectangular
566	16.08	Burma	None	Oval
569	12.73	Burma	None	Cushion
550	52.08/51.26	Ceylon	None	Oval
511	49.34	Ceylon	None	Oval
521	28.73	Ceylon	None	Cushion
547	25.01	Ceylon	None	Oval

SPINELS

LOT	WEIGHT	ORIGIN	TREATMENT	CUT
515	20.83	Tanzania	None	Cushion

RUBY

LOT	WEIGHT	ORIGIN	TREATMENT	CUT
549	14.46	Burma	None	Oval
524	8.21	Burma	No heat / Minor oil	Cushion

EMERALD

LOT	WEIGHT	ORIGIN	TREATMENT	CUT
513	6.78*	Colombia	None	Octagonal
543	8.41	Colombia	Minor oil	Square
520	14.72	Colombia	Minor resin	Cushion
572	65.01	Colombia	Minor	Pear

CONDITIONS OF SALE • BUYING AT CHRISTIE'S

CONDITIONS OF SALE

These Conditions of Sale and the Important Notices and Explanation of Cataloguing Practice set out the terms on which we offer the **lots** listed in this catalogue for sale. By registering to bid and/or by bidding at auction you agree to these terms, so you should read them carefully before doing so. You will find a glossary at the end explaining the meaning of the words and expressions coloured in bold.

Unless we own a **lot** (Δ symbol), Christie's acts as agent for the seller.

A BEFORE THE SALE

1 DESCRIPTION OF LOTS

(a) Certain words used in the **catalogue description** have special meanings. You can find details of these on the page headed "Important Notices and Explanation of Cataloguing Practice" which forms part of these terms. You can find a key to the Symbols found next to certain catalogue entries under the section of the catalogue called "Symbols Used in this Catalogue".

(b) Our description of any **lot** in the catalogue, any **condition report** and any other statement made by us (whether orally or in writing) about any **lot**, including about its nature or **condition**, artist, period, materials, approximate dimensions or **provenance** are our opinion and not to be relied upon as a statement of fact. We do not carry out in-depth research of the sort carried out by professional historians and scholars. All dimensions and weights are approximate only.

2 OUR RESPONSIBILITY FOR OUR DESCRIPTION OF LOTS

We do not provide any guarantee in relation to the nature of a **lot** apart from our **authenticity warranty** contained in paragraph E2 and to the extent provided in paragraph I below.

3 CONDITION

(a) The **condition of lots** sold in our auctions can vary widely due to factors such as age, previous damage, restoration, repair and wear and tear. Their nature means that they will rarely be in perfect **condition**. **Lots** are sold "as is," in the **condition** they are in at the time of the sale, without any representation or **warranty** or assumption of liability of any kind as to **condition** by Christie's or by the seller.

(b) Any reference to **condition** in a catalogue entry or in a **condition report** will not amount to a full description of **condition**, and images may not show a **lot** clearly. Colours and shades may look different in print or on screen to how they look on physical inspection. **Condition reports** may be available to help you evaluate the **condition** of a **lot**. **Condition reports** are provided free of charge as a convenience to our buyers and are for guidance only. They offer our opinion but they may not refer to all faults, inherent defects, restoration, alteration or adaptation because our staff are not professional restorers or conservators. For that reason they are not an alternative to examining a **lot** in person or taking your own professional advice. It is your responsibility to ensure that you have requested, received and considered any **condition report**.

4 VIEWING LOTS PRE-AUCTION

(a) If you are planning to bid on a **lot**, you should inspect it personally or through a knowledgeable representative before you make a bid to make sure that you accept the description and its **condition**. We recommend you get your own advice from a restorer or other professional adviser.

(b) Pre-auction viewings are open to the public free of charge. Our specialists may be available to answer questions at pre-auction viewings or by appointment.

5 ESTIMATES

Estimates are based on the **condition**, rarity, quality and **provenance** of the **lots** and on prices recently paid at auction for similar property. **Estimates** can change. Neither you, nor anyone else, may rely on any **estimates** as a prediction or guarantee of the actual selling price of a **lot** or its value for any other purpose. **Estimates** do not include the **buyer's premium** or any applicable taxes.

6 WITHDRAWAL

Christie's may, at its option, withdraw any **lot** at any time prior to or during the sale of the **lot**. Christie's has no liability to you for any decision to withdraw.

7 JEWELLERY

(a) Coloured gemstones (such as rubies, sapphires and emeralds) may have been treated to improve their look, through methods such as heating and oiling. These methods are accepted by the international jewellery trade but may make the gemstone less strong and/or require special care over time.

(b) All types of gemstones may have been improved by some method. You may request a gemmological report for any item which does not have a report if the request is made to us at least three weeks before the date of the auction and you pay the fee for the report.

(c) We do not obtain a gemmological report for every gemstone sold in our auctions. Where we do get gemmological reports from internationally accepted gemmological laboratories, such reports will be described in the catalogue. Reports from American gemmological laboratories will describe any improvement or treatment to the gemstone. Reports from European gemmological laboratories will describe any improvement or treatment only if we request that they do so, but will confirm when no improvement or treatment has been made. Because of differences in approach and technology, laboratories may not agree whether a particular gemstone has been treated, the amount of treatment or whether treatment is permanent. The gemmological laboratories will only report on the improvements or treatments known to the laboratories at the date of the report.

(d) For jewellery sales, **estimates** are based on the information in any gemmological report or, if no report is available, assume that the gemstones may have been treated or enhanced.

8 WATCHES & CLOCKS

(a) Almost all clocks and watches are repaired in their lifetime and may include parts which are not original. We do not give a **warranty** that any individual component part of any watch or clock is **authentic**. Watchbands described as "associated" are not part of the original watch and may not be **authentic**. Clocks may be sold without pendulums, weights or keys.

(b) As collectors' watches and clocks often have very fine and complex mechanisms, a general service, change of battery or further repair work may be necessary, for which you are responsible. We do not give a **warranty** that any watch or clock is in good working order. Certificates are not available unless described in the catalogue.

(c) Most watches have been opened to find out the type and quality of movement. For that reason, watches with water resistant cases may not be waterproof and we recommend you have them checked by a competent watchmaker before use. Important information about the sale, transport and shipping of watches and watchbands can be found in paragraph H2(g).

B REGISTERING TO BID

1 NEW BIDDERS

(a) If this is your first time bidding at Christie's or you are a returning bidder who has not bought anything from any of our salerooms within the last two years you must register at least 48 hours before an auction to give us enough time to process and approve your registration. We may, at our option, decline to permit you to register as a bidder. You will be asked for the following:

(i) for individuals: Photo identification (driving licence, national identity card or passport) and, if not shown on the ID document, proof of your current address (for example, a current utility bill or bank statement);

(ii) for corporate clients: Your Certificate of Incorporation or equivalent document(s) showing your name and registered address together with documentary proof of directors and beneficial owners; and

(iii) for trusts, partnerships, offshore companies and other business structures, please contact us in advance to discuss our requirements. For help, please contact Client Services on +41 22 319 1766.

(b) We may also ask you to give us a financial reference and/or a deposit as a **condition** of allowing you to bid. For help, please contact Client Services on +41 22 319 1766.

2 RETURNING BIDDERS

We may at our option ask you for current identification as described in paragraph B1(a) above, a financial reference or a deposit as a **condition** of allowing you to bid. If you have not bought anything from any of our salerooms in the last two years or if you want to spend more than on previous occasions, please contact Client Services on +41 22 319 1766.

3 IF YOU FAIL TO PROVIDE THE RIGHT DOCUMENTS

If in our opinion you do not satisfy our bidder identification and registration procedures including, but not limited to completing any anti-money laundering and/or anti-terrorism financing checks we may require to our satisfaction, we may refuse to register you to bid, and if you make a successful bid, we may cancel the contract for sale between you and the seller.

4 BIDDING ON BEHALF OF ANOTHER PERSON

(a) As authorised bidder: If you are bidding on behalf of another person, that person will need to complete the registration requirements above before you can bid, and supply a signed letter authorising you to bid for him/her.

(b) **As agent for an undisclosed principal:** If you are bidding as an agent for an undisclosed principal (the ultimate buyer(s)), you accept personal liability to pay the **purchase price** and all other sums due, unless it has been agreed in writing with Christie's before commencement of the auction that the bidder is acting as an agent on behalf of a named third party acceptable to Christie's and that Christie's will only seek payment from the named third party.

5 BIDDING IN PERSON

If you wish to bid in the saleroom you must register for a numbered bidding paddle at least 30 minutes before the auction. You may register online at www.christies.com or in person. For help, please contact Client Services on +41 22 319 1766.

6 BIDDING SERVICES

The bidding services described below are a free service offered as a convenience to our clients and Christie's is not responsible for any error (human or otherwise), omission or breakdown in providing these services.

(a) Phone Bids

Your request for this service must be made no later than 24 hours prior to the auction. We will accept bids by telephone for **lots** only if our staff are available to take the bids. If you need to bid in a language other than in English, you must arrange this well before the auction. We may record telephone bids. By bidding on the telephone, you are agreeing to us recording your conversations. You also agree that your telephone bids are governed by these Conditions of Sale.

(b) Internet Bids on Christie's Live™

For certain auctions we will accept bids over the Internet. For more information, please visit <https://www.christies.com/buying-services/buying-guide/register-and-bid/>. As well as these Conditions of Sale, internet bids are governed by the Christie's LIVE™ Terms of Use which are available on <https://www.christies.com/LiveBidding/OnlineTermsOfUse.aspx>.

(c) Written Bids

You can find a Written Bid Form at the back of our catalogues, at any Christie's office or by choosing the sale and viewing the **lots** online at www.christies.com. We must receive your completed Written Bid Form at least 24 hours before the auction. Bids must be placed in the

currency of the saleroom. The **auctioneer** will take reasonable steps to carry out written bids at the lowest possible price, taking into account the **reserve**. If you make a written bid on a **lot** which does not have a **reserve** and there is no higher bid than yours, we will bid on your behalf at around 50% of the **low estimate** or, if lower, the amount of your bid. If we receive written bids on a **lot** for identical amounts, and at the auction these are the highest bids on the **lot**, we will sell the **lot** to the bidder whose written bid we received first.

C CONDUCTING THE SALE

1 WHO CAN ENTER THE AUCTION

We may, at our option, refuse admission to our premises or decline to permit participation in any auction or to reject any bid.

2 RESERVES

Unless otherwise indicated, all **lots** are subject to a **reserve**. We identify **lots** that are offered without a **reserve** with the symbol • next to the **lot** number. The **reserve** cannot be more than the **lot's low estimate**, unless the **lot** is subject to a third party guarantee and the irrevocable bid exceeds the printed **low estimate**. In that case, the **reserve** will be set at the amount of the irrevocable bid. **Lots** which are subject to a third party guarantee arrangement are identified in the catalogue with the symbol ♦.

3 AUCTIONEER'S DISCRETION

The **auctioneer** can at his sole option:

(a) refuse any bid;

(b) move the bidding backwards or forwards in any way he or she may decide, or change the order of the **lots**;

(c) withdraw any **lot**;

(d) divide any **lot** or combine any two or more **lots**;

(e) reopen or continue the bidding even after the hammer has fallen; and

(f) in the case of error or dispute related to bidding and whether during or after the auction, to continue the bidding, determine the successful bidder, cancel the sale of the **lot**, or reoffer and resell any **lot**. If you believe that the **auctioneer** has accepted the successful bid in error, you must provide a written notice detailing your claim within 3 business days of the date of the auction. The **auctioneer** will consider such claim in good faith. If the **auctioneer**, in the exercise of his or her discretion under this paragraph, decides after the auction is complete, to cancel the sale of a **lot**, or reoffer and resell a **lot**, he or she will notify the successful bidder no later than by the end of the 7th calendar day following the date of the auction. The **auctioneer's** decision in exercise of this discretion is final. This paragraph does not in any way prejudice Christie's ability to cancel the sale of a **lot** under any other applicable provision of these Conditions of Sale, including the rights of cancellation set forth in sections B(3), E(2)(i), F(4) and J(1).

4 BIDDING

The **auctioneer** accepts bids from:

(a) bidders in the saleroom;

(b) telephone bidders, and internet bidders through 'Christie's LIVE™' (as shown above in Section B6); and

(c) written bids (also known as absentee bids or commission bids) left with us by a bidder before the auction.

5 BIDDING ON BEHALF OF THE SELLER

The **auctioneer** may, at his or her sole option, bid on behalf of the seller up to but not including the amount of the **reserve** either by making consecutive bids or by making bids in response to other bidders. The **auctioneer** will not identify these as bids made on behalf of the seller and will not make any bid on behalf of the seller at or above the **reserve**. If **lots** are offered without **reserve**, the **auctioneer** will generally decide to open the bidding at 50% of the **low estimate** for the **lot**. If no bid is made at that level, the **auctioneer** may decide to go backwards at his or her sole option until a bid is made, and then continue up from that amount. In the event that there are no bids on a **lot**, the **auctioneer** may deem such **lot** unsold.

6 BID INCREMENTS

Bidding generally starts below the **low estimate** and increases in steps (bid increments). The **auctioneer** will decide at his or her sole option where the bidding should start and the bid increments. The usual bid increments are shown for guidance only on the Written Bid Form at the back of this catalogue.

7 CURRENCY CONVERTER

The saleroom video screens (and Christie's LIVE™) may show bids in some other major currencies as well as Swiss Francs. Any conversion is for guidance only and we cannot be bound by any rate of exchange used. Christie's is not responsible for any error (human or otherwise), omission or breakdown in providing these services.

8 SUCCESSFUL BIDS

Unless the **auctioneer** decides to use his or her discretion as set out in paragraph C3 above, when the **auctioneer's** hammer strikes, we have accepted the last bid. This means a contract for sale has been formed between the seller and the successful bidder. We will issue an invoice only to the registered bidder who made the successful bid. While we send out invoices by post and/or email after the auction, we do not accept responsibility for telling you whether or not your bid was successful. If you have bid by written bid, you should contact us by telephone or in person as soon as possible after the auction to get details of the outcome of your bid to avoid having to pay unnecessary storage charges.

9 LOCAL BIDDING LAWS

You agree that when bidding in any of our sales that you will strictly comply with all local laws and regulations in force at the time of the sale for the relevant sale site.

D THE BUYER'S PREMIUM AND TAXES

1 THE BUYER'S PREMIUM

In addition to the **hammer price**, the successful bidder agrees to pay us a **buyer's premium** on the **hammer price** of each lot sold. On all lots we charge 26% of the **hammer price** up to and including CHF 900,000, 21% on that part of the **hammer price** over CHF 900,000 and up to and including CHF 6,000,000, and 15% of that part of the **hammer price** above CHF 6,000,001. VAT will be added to the **buyer's premium** and is payable by you. The VAT may not be shown separately on our invoice because of tax laws. You may be eligible to have a VAT refund in certain circumstances if the lot is exported. Please see the "VAT refunds: what can I reclaim?" section of "VAT Symbols and Explanation" for further information.

2 TAXES

The successful bidder is responsible for all applicable tax including any VAT, sales or compensating use tax or equivalent tax wherever they arise on the **hammer price** and/or the **buyer's premium**. VAT charges and refunds depend on the particular circumstances of the buyer. It is the buyer's responsibility to ascertain and pay all taxes due. VAT is payable on the **buyer's premium** and, for some **lots**, VAT is payable on the **hammer price**. Further information can be found in the "VAT Symbols and Explanation" section of the catalogue. In all circumstances EU and Swiss law takes precedence.

For **lots** Christie's ships to the United States, a sales or use tax may be due on the **hammer price**, **buyer's premium** and/or any other charges related to the **lot**, regardless of the nationality or citizenship of the purchaser. Christie's will collect sales tax where legally required. The applicable sales tax rate will be determined based upon the state, county, or locale to which the **lot** will be shipped. Successful bidders claiming an exemption from sales tax must provide appropriate documentation to Christie's prior to the release of the **lot**. For shipments to those states for which Christie's is not required to collect sales tax, a successful bidder may be required to remit use tax to that state's taxing authorities. Christie's recommends you obtain your own independent tax advice with further questions.

3 ARTIST'S RESALE ROYALTY

In certain countries, local laws entitle the artist or the artist's estate to a royalty known as 'artist's resale right' when any **lot** created by the artist is sold. We identify these **lots** with the symbol λ next to the **lot** number. If these laws apply to a **lot**, you must pay us an extra amount equal to the royalty. We will pay the royalty to the appropriate authority on the seller's behalf.

The artist's resale royalty applies if the **hammer price** of the lot is 1,000 euro or more. The total royalty for any **lot** cannot be more than 12,500 euro. We work out the amount owed as follows:

Royalty for the portion of the **hammer price**

(In euros)

4% up to 50,000

3% between 50,000.01 and 200,000

1% between 200,000.01 and 350,000

0.50% between 350,000.01 and 500,000

over 500,000, the lower of 0.25% and 12,500 euro.

We will work out the artist's resale royalty using the euro to sterling rate of exchange of the European Central Bank on the day of the auction.

E WARRANTIES

1 SELLER'S WARRANTIES

For each **lot**, the seller gives a **warranty** that the seller:

(a) is the owner of the **lot** or a joint owner of the **lot** acting with the permission of the other co-owners or, if the seller is not the owner or a joint owner of the **lot**, has the permission of the owner to sell the **lot**, or the right to do so in law; and

(b) has the right to transfer ownership of the **lot** to the buyer without any restrictions or claims by anyone else.

If either of the above warranties are incorrect, the seller shall not have to pay more than the **purchase price** (as defined in paragraph F1(a) below) paid by you to us. The seller will not be responsible to you for any reason for loss of profits or business, expected savings, loss of opportunity or interest, costs, damages, **other damages** or expenses. The seller gives no **warranty** in relation to any **lot** other than as set out above and, as far as the seller is allowed by law, all warranties from the seller to you, and all other obligations upon the seller which may be added to this agreement by law, are excluded.

2 OUR AUTHENTICITY WARRANTY

We warrant, subject to the terms below, that the **lots** in our sales are **authentic** (our "authenticity warranty"). If, within 5 years of the date of the auction, you give notice to us that your **lot** is not **authentic**, subject to the terms below, we will refund the **purchase price** paid by you. The meaning of **authentic** can be found in the glossary at the end of these Conditions of Sale. The terms of the **authenticity warranty** are as follows:

(a) It will be honoured for claims notified within a period of 5 years from the date of the auction. After such time, we will not be obligated to honour the **authenticity warranty**.

(b) It is given only for information shown in **UPPERCASE type** in the first line of the **catalogue description** (the "Heading"). It does not apply to any information other than in the **Heading** even if shown in **UPPERCASE type**.

(c) The **authenticity warranty** does not apply to any **Heading** or part of a **Heading** which is **qualified**. **Qualified** means limited by a clarification in a **lot's catalogue description** or by the use in a **Heading** of one of the terms listed in the section titled **Qualified Headings** on the page of the catalogue headed "Important Notices and Explanation of Cataloguing Practices". For example, use of the term "ATTRIBUTED TO..." in a **Heading** means that the **lot** is in Christie's opinion probably a work by the named artist but no **warranty** is provided that the **lot** is the work of the named artist. Please read the full list of **Qualified Headings** and a **lot's full catalogue description** before bidding.

(d) The **authenticity warranty** applies to the **Heading** as amended by any **Saleroom Notice**.

(e) The **authenticity warranty** does not apply where scholarship has developed since the auction leading to a change in generally accepted opinion. Further, it does not apply if the **Heading** either matched the generally accepted opinion of experts at the date of the sale or drew attention to any conflict of opinion.

(f) The **authenticity warranty** does not apply if the **lot** can only be shown not to be **authentic** by a scientific process which, on the date we published the catalogue, was not available or generally accepted for use, or which was unreasonably expensive or impractical, or which was likely to have damaged the **lot**.

(g) The benefit of the **authenticity warranty** is only available to the original buyer shown on the invoice for the **lot** issued at the time of the sale and only if, on the date of the notice of claim, the original buyer is the full owner of the **lot** and the **lot** is free from any claim, interest or restriction by anyone else. The benefit of this **authenticity warranty** may not be transferred to anyone else.

(h) In order to claim under the **authenticity warranty**, you must:

(i) give us written details, including full supporting evidence, of any claim within 5 years of the date of the auction;

(ii) at Christie's option, we may require you to provide the written opinions of two recognised experts in the field of the **lot** mutually agreed by you and us in advance confirming that the **lot** is not **authentic**. If we have any doubts, we **reserve** the right to obtain additional opinions at our expense; and

(iii) return the **lot** at your expense to the saleroom from which you bought it in the **condition** it was in at the time of sale.

(i) Your only right under this **authenticity warranty** is to cancel the sale and receive a refund of the **purchase price** paid by you to us. We will not, in any circumstances, be required to pay you more than the **purchase price** nor will we be liable for any loss of profits or business, loss of opportunity or value, expected savings or interest, costs, damages, **other damages** or expenses.

3 YOUR WARRANTIES

(a) You **warrant** that the funds used for settlement are not connected with any criminal activity, including tax evasion, and you are neither under investigation, nor have you been charged with or convicted of money laundering, terrorist activities or other crimes.

(b) where you are bidding on behalf of another person, you warrant that:

(i) you have conducted appropriate customer due diligence on the ultimate buyer(s) of the **lot(s)** in accordance with all applicable anti-money laundering and sanctions laws, consent to us relying on this due diligence, and you will retain for a period of not less than 5 years the documentation evidencing the due diligence. You will make such documentation promptly available for immediate inspection by an independent third-party auditor upon our written request to do so;

(ii) the arrangements between you and the ultimate buyer(s) in relation to the **lot** or otherwise do not, in whole or in part, facilitate tax crimes;

(iii) you do not know, and have no reason to suspect, that the funds used for settlement are connected with, the proceeds of any criminal activity, including tax evasion, or that the ultimate buyer(s) are under investigation, or have been charged with or convicted of money laundering, terrorist activities or other crimes.

F PAYMENT

1 HOW TO PAY

(a) Immediately following the auction, you must pay the **purchase price** being:

(i) the **hammer price**; and

(ii) the **buyer's premium**; and

(iii) any amounts due under section D3 above; and

(iv) any duties, goods, sales, use, compensating or service tax or VAT.

Payment is due no later than by the end of the 7th calendar day following the date of the auction (the "due date").

(b) We will only accept payment from the registered bidder. Once issued, we cannot change the buyer's name on an invoice or re-issue the invoice in a different name. You must pay immediately even if you want to export the **lot** and you need an export licence.

(c) You must pay for **lots** bought at Christie's in Switzerland in the currency stated on the invoice in one of the following ways:

(i) Wire transfer

You must make payments to:

Crédit Suisse, Case Postale 100, 1211 Geneva 70, Switzerland, Account number: 161766 - 41, Clearing: 4835, Swift code: CRESCHZ12A. IBAN (international bank account number): CH30 0483 5016 1766 4100 0.

(ii) Credit Card.

We accept most major credit cards subject to certain conditions. You may make payment via credit card in person. You may also make a "cardholder not present" (CNP) payment by calling Christie's Post-Sale Services Department on +41 22 319 1780 or for some sales, by logging into your MyChristie's account by going to: www.christies.com/mychristies Details of the conditions and restrictions applicable to credit card payments are available from our Post-Sale Services Department, whose details are set out in paragraph (e) below.

If you pay for your purchase using a credit card issued outside the region of the sale, depending on the type of credit card and account you hold, the payment may incur a cross-border transaction fee. If you think this may apply to you, please check with your credit card issuer before making the payment.

Please note that for sales that permit online payment, certain transactions will be ineligible for credit card payment.

(iii) Cash

We accept cash subject to a maximum of CHF. 12,500 per buyer per year at our Cashier's Department only (subject to conditions).

(iv) Banker's draft

We do not accept banker's drafts for sales in Switzerland.

(v) Cheque

We do not accept personal or company cheques for sales in Switzerland.

(d) You must quote the sale number, lot number(s), your invoice number and Christie's client account number when making a payment. All payments sent by post must be sent to: Christie's, Cashiers Department, 12, Rue du Mont-Blanc, 1201 Geneva, Switzerland.

(e) For more information please contact our Cashiers Department by phone on +41 22 319 1740.

2 TRANSFERRING OWNERSHIP TO YOU

You will not own the **lot** and ownership of the **lot** will not pass to you until we have received full and clear payment of the **purchase price**, even in circumstances where we have released the **lot** to the buyer.

3 TRANSFERRING RISK TO YOU

The risk in and responsibility for the **lot** will transfer to you from whichever is the earlier of the following:

(a) When you collect the **lot**; or

(b) At the end of the 30th day following the date of the auction or, if earlier, the date the **lot** is taken into care by a third party warehouse as set out on the page headed "Storage and Collection", unless we have agreed otherwise with you in writing.

4 WHAT HAPPENS IF YOU DO NOT PAY

(a) If you fail to pay us the **purchase price** in full by the **due date**, we will be entitled to do one or more of the following (as well as enforce our rights under paragraph F5 and any other rights or remedies we have by law):

(i) to charge interest from the **due date** at a rate of 1% per month on the unpaid amount due;

(ii) we can cancel the sale of the **lot**. If we do this, we may sell the **lot** again, publicly or privately on such terms we shall think necessary or appropriate, in which case you must pay us any shortfall between the **purchase price** and the proceeds from the resale. You must also pay all costs, expenses, losses, damages and legal fees we have to pay or may suffer and any shortfall in the seller's commission on the resale;

(iii) we can pay the seller an amount up to the net proceeds payable in respect of the amount bid by your default in which case you acknowledge and understand that Christie's will have all of the rights of the seller to pursue you for such amounts;

(iv) we can hold you legally responsible for the **purchase price** and may begin legal proceedings to recover it together with other losses, interest, legal fees and costs as far as we are allowed by law;

(v) we can take what you owe us from any amounts which we or any company in the **Christie's Group** may owe you (including any deposit or other part-payment which you have paid to us);

(vi) we can, at our option, reveal your identity and contact details to the seller;

(vii) we can reject at any future auction any bids made by or on behalf of the buyer or to obtain a deposit from the buyer before accepting any bids;

(viii) to exercise all the rights and remedies of a person holding security over any property in our possession owned by you, whether by way of pledge, security interest or in any other way as permitted by the law of the place where such property is located. You will be deemed to have granted such security to us and we may retain such property as collateral security for your obligations to us; and

(ix) we can take any other action we see necessary or appropriate.

(b) If you owe money to us or to another **Christie's Group** company, we can use any amount you do pay, including any deposit or other part-payment you have made to us, or which we owe you, to pay off any amount you owe to us or another **Christie's Group** company for any transaction.

(c) If you make payment in full after the **due date**, and we choose to accept such payment we may charge you storage and transport costs from the date that is 30 calendar days following the auction in accordance with paragraphs Gd(i) and (ii). In such circumstances paragraph Gd(iv) shall apply.

5 KEEPING YOUR PROPERTY

If you owe money to us or to another **Christie's Group** company, as well as the rights set out in F4 above, we can use or deal with any of your property we hold or which is held by another **Christie's Group** company in any way we are allowed to by law. We will only release your property to you after you pay us or the relevant **Christie's Group** company in full for what you owe. However, if we choose, we can also sell your property in any way we think appropriate. We will use the proceeds of the sale against any amounts you owe us and we will pay any amount left from that sale to you. If there is a shortfall, you must pay us any difference between the amount we have received from the sale and the amount you owe us.

6 COLLECTION AND STORAGE

(a) We ask that you collect purchased **lots** promptly following the auction (but note that you may not collect any **lot** until you have made full and clear payment of all amounts due to us).

(b) Information on collecting **lots** is set out on the storage and collection page and on an information sheet which you can get from the bidder registration staff or Christie's Post-sale Services Department +41 22 319 1780.

(c) If you do not collect any **lot** promptly following the auction we can, at our option, remove the **lot** to another Christie's location or an affiliate or third party warehouse.

(d) If you do not collect a **lot** by the end of the 30th day following the date of the auction, unless otherwise agreed in writing:

(i) we will charge you storage costs from that date.

(ii) we can, at our option, move the **lot** to or within an affiliate or third party warehouse and charge you transport costs and handling fees for doing so.

- (iii) we may sell the **lot** in any commercially reasonable way we think appropriate.
- (iv) the storage terms which can be found at christies.com/storage shall apply.
- (v) Nothing in this paragraph is intended to limit our rights under paragraph F4.

H TRANSPORT AND SHIPPING

1 TRANSPORT AND SHIPPING

You must make all transport and shipping arrangements. However, we can arrange to pack, transport and ship your property if you ask us to and pay the costs of doing so. We recommend that you ask us for an **estimate**, especially for any large items or items of high value that need professional packing before you bid. We may also suggest other handlers, packers, transporters or experts if you ask us to do so. For more information, please contact Christie's Art Transport on +41 (0)22 319 1717. See the information set out at www.christies.com/shipping or contact us at shippinggeneva@christies.com. We will take reasonable care when we are handling, packing, transporting and shipping a **lot**. However, if we recommend another company for any of these purposes, we are not responsible for their acts, failure to act or neglect.

2 EXPORT AND IMPORT

Any **lot** sold at auction may be affected by laws on exports from the country in which it is sold and the import restrictions of other countries. Many countries require a declaration of export for property leaving the country and/or an import declaration on entry of property into the country. Local laws may prevent you from importing a **lot** or may prevent you selling a **lot** in the country you import it into. We will not be obliged to cancel your purchase and refund the **purchase price** if your **lot** may not be exported, imported or it is seized for any reason by a government authority. It is your responsibility to determine and satisfy the requirements of any applicable laws or regulations relating to the export or import of any **lot** you purchase.

(a) You alone are responsible for getting advice about and meeting the requirements of any laws or regulations which apply to exporting or importing any **lot** prior to bidding. If you are refused a licence or there is a delay in getting one, you must still pay us in full for the **lot**. We may be able to help you apply for the appropriate licences if you ask us to and pay our fee for doing so. However, we cannot guarantee that you will get one. For more information, please contact Christie's Art Transport on +41 (0)22 319 1717. See the information set out at www.christies.com/shipping or contact us at shippinggeneva@christies.com.

(b) You alone are responsible for any applicable taxes, tariffs or other government-imposed charges relating to the export or import of the **lot**. If Christie's exports or imports the **lot** on your behalf, and if Christie's pays these applicable taxes, tariffs or other government-imposed charges, you agree to refund that amount to Christie's.

(c) Lots made of protected species

Lots made of or including (regardless of the percentage) endangered and other protected species of wildlife are marked with the symbol - in the catalogue. This material includes, among other things, ivory, tortoiseshell, crocodile skin, rhinoceros horn, whalebone certain species of coral, and Brazilian rosewood. You should check the relevant customs laws and regulations before bidding on any **lot** containing wildlife material if you plan to import the **lot** into another country. Several countries refuse to allow you to import property containing these materials, and some other countries require a licence from the relevant regulatory agencies in the countries of exportation as well as importation. In some cases, the **lot** can only be shipped with an independent scientific confirmation of species and/or age and you will need to obtain these at your own cost. If a **lot** contains elephant ivory, or any other wildlife material that could be confused with elephant ivory, (for example, mammoth ivory, walrus ivory, helmeted hornbill ivory) please see further important information in paragraph (d) if you are proposing to import the **lot** into the USA. We will not be obliged to cancel your purchase and refund the **purchase price** if your **lot** may not be exported, imported or it is seized for any reason by a government authority. It is your responsibility to determine and satisfy the requirements of any applicable laws or regulations relating to the export or import of property containing such protected or regulated material.

(d) US import ban on African elephant ivory

The USA prohibits the import of ivory from the African elephant. Any **lot** containing elephant ivory or other wildlife material that could be easily confused with elephant ivory (for example, mammoth ivory, walrus ivory, helmeted hornbill ivory) can only be imported into the US with results of a rigorous scientific test acceptable to Fish & Wildlife, which confirms that the material is not African elephant ivory. Where we have conducted such rigorous scientific testing on a **lot** prior to sale, we will make this clear in the **lot** description. In all other cases, we cannot confirm whether a **lot** contains African elephant ivory, and you will buy that **lot** at your own risk and be responsible for any scientific test or other reports required for import into the USA at your own cost. If such scientific test is inconclusive or confirms the material is from the African elephant, we will not be obliged to cancel your purchase and refund the **purchase price**.

(e) Lots of Iranian origin

Some countries prohibit or restrict the purchase and/or import of Iranian-origin "works of conventional craftsmanship" (works that are not by a recognized artist and/or that have a function, for example: carpets, bowls, ewers, tiles, ornamental boxes). For example, the USA prohibits the import of this type of property and its purchase by US persons (wherever located). Other countries only permit the import of this property in certain circumstances. As a convenience to buyers, Christie's indicates under the title of a **lot** if the **lot** originates from Iran (Persia). It is your responsibility to ensure you do not bid on or import a **lot** in contravention of the sanctions or trade embargoes that apply to you.

(f) Gold

Gold of less than 18ct does not qualify in all countries as 'gold' and may be refused import into those countries as 'gold'.

(g) Watches

Many of the watches offered for sale in this catalogue are pictured with straps made of endangered or protected animal materials such

as alligator or crocodile. These lots are marked with the symbol ♣ in the catalogue. These endangered species straps are shown for display purposes only and are not for sale. Christie's will remove and retain the strap prior to shipment from the sale site. At some sale sites, Christie's may, at its discretion, make the displayed endangered species strap available to the buyer of the **lot** free of charge if collected in person from the sale site within 1 year of the date of the sale. Please check with the department for details on a particular **lot**.

For all symbols and other markings referred to in paragraph H2, please note that **lots** are marked as a convenience to you, but we do not accept liability for errors or for failing to mark **lots**.

AUTHENTICITY CERTIFICATES

As certain manufacturers may not issue certificates of authenticity, Christie's has no obligation to furnish a buyer with a certificate of authenticity from the manufacturer, except where specifically noted in the catalogue. Unless Christie's is satisfied that it should cancel the sale in accordance with the **authenticity warranty**, the failure of a manufacturer to issue a certificate will not constitute grounds for cancellation of the sale.

REMOVAL OF WATCH BATTERIES

Lots marked with the symbol ⊕ in the catalogue incorporate batteries which may be designated as "dangerous goods" under international laws and regulations governing the transport of goods by air freight. If buyers request shipment of such **lots** to regions outside the region in which the saleroom is located, the batteries will be removed and retained prior to shipment. If such **lots** are collected from the saleroom, the batteries will be made available for collection free of charge.

I OUR LIABILITY TO YOU

(a) We give no **warranty** in relation to any statement made, or information given, by us or our representatives or employees, about any **lot** other than that as set out in the **authenticity warranty** and, as far as we are allowed by law, all **warranties** and other terms which may be added to this agreement by law are excluded. The seller's warranties contained in paragraph E1 are their own and we do not have any liability to you in relation to those **warranties**.

(b) (i) We are not responsible to you for any reason (whether for breaking this agreement or any other matter relating to your purchase of, or bid for, any **lot**) other than in the event of fraud or fraudulent misrepresentation by us or other than as expressly set out in these conditions of sale; or

(ii) We do not give any representation, **warranty** or guarantee or assume any liability of any kind in respect of any **lot** with regard to merchantability, fitness for a particular purpose, description, size, quality, **condition**, attribution, authenticity, rarity, importance, medium, **provenance**, exhibition history, literature, or historical relevance. Except as required by local law, any **warranty** of any kind is excluded by this paragraph.

(c) In particular, please be aware that our written and telephone bidding services, Christie's LIVE™, **condition** reports, currency converter and saleroom video screens are free services and we are not responsible to you for any error (human or otherwise), omission or breakdown in these services.

(d) We have no **responsibility** to any person other than a buyer in connection with the purchase of any **lot**.

(e) If, in spite of the terms in paragraphs (a) to (d) or E2(i) above, we are found to be liable to you for any reason, we shall not have to pay more than the **purchase price** paid by you to us. We will not be responsible to you for any reason for loss of profits or business, loss of opportunity or value, expected savings or interest, costs, damages, or expenses.

J OTHER TERMS

1 OUR ABILITY TO CANCEL

In addition to the other rights of cancellation contained in this agreement, we can cancel a sale of a **lot** if: (i) any of your warranties in paragraph E3 are not correct; (ii) we reasonably believe that completing the transaction is or may be unlawful; or (iii) we reasonably believe that the sale places us or the seller under any liability to anyone else or may damage our reputation.

2 RECORDINGS

We may videotape and record proceedings at any auction. We will keep any personal information confidential, except to the extent disclosure is required by law. However, we may, through this process, use or share these recordings with another **Christie's Group** company and marketing partners to analyse our customers and to help us to tailor our services for buyers. If you do not want to be videotaped, you may make arrangements to make a telephone or written bid or bid on Christie's LIVE™ instead. Unless we agree otherwise in writing, you may not videotape or record proceedings at any auction.

3 COPYRIGHT

We own the copyright in all images, illustrations and written material produced by or for us relating to a **lot** (including the contents of our catalogues unless otherwise noted in the catalogue). You cannot use them without our prior written permission. We do not offer any guarantee that you will gain any copyright or other reproduction rights to the **lot**.

4 ENFORCING THIS AGREEMENT

If a court finds that any part of this agreement is not valid or is illegal or impossible to enforce, that part of the agreement will be treated as being deleted and the rest of this agreement will not be affected.

5 TRANSFERRING YOUR RIGHTS AND RESPONSIBILITIES

You may not grant a security over or transfer your rights or responsibilities under these terms on the contract of sale with the buyer unless we have given our written permission. This agreement will be binding on your successors or estate and anyone who takes over your rights and responsibilities.

6 TRANSLATIONS

If we have provided a translation of this agreement, we will use this original version in deciding any issues or disputes which arise under this agreement.

7 PERSONAL INFORMATION

We will hold and process your personal information and may pass it to another **Christie's Group** company for use as described in, and in line with, our privacy notice at www.christies.com/about-us/contact/privacy and if you are a resident of California you can see a copy of our California Consumer Privacy Act statement at <https://www.christies.com/about-us/contact/ccpa>.

8 WAIVER

No failure or delay to exercise any right or remedy provided under these Conditions of Sale shall constitute a waiver of that or any other right or remedy, nor shall it prevent or restrict the further exercise of that or any other right or remedy. No single or partial exercise of such right or remedy shall prevent or restrict the further exercise of that or any other right or remedy.

9 LAW AND DISPUTES

This agreement, and any contractual or non-contractual dispute arising out of or in connection with this agreement, will be governed by Swiss law, excluding the Convention on Contracts for the International Sale of Goods. Before either you or we start any court proceedings and if you and we agree, you and we will try to settle the dispute by mediation in accordance with the Swiss Rules of Commercial Mediation of the Swiss Chambers of Commerce and Industry. If the dispute is not settled by mediation, you agree for our benefit that the dispute will be referred to and dealt with exclusively in the cantonal courts located in Christie's place of business, subject to any appeal to the Swiss Federal Supreme Court; however, we will have the right to bring proceedings against you in any other court.

10 REPORTING ON WWW.CHRISTIES.COM

Details of all **lots** sold by us, including **catalogue descriptions** and prices, may be reported on www.christies.com. Sales totals are **hammer price plus buyer's premium** and do not reflect costs, financing fees, or application of buyer's or seller's credits. We regret that we cannot agree to requests to remove these details from www.christies.com.

K GLOSSARY

auctioneer: the individual auctioneer and/or Christie's. **authentic**: a genuine example, rather than a copy or forgery of:

(i) the work of a particular artist, author or manufacturer, if the **lot** is described in the **Heading** as the work of that artist, author or manufacturer;

(ii) a work created within a particular period or culture, if the **lot** is described in the **Heading** as a work created during that period or culture;

(iii) a work for a particular origin source if the **lot** is described in the **Heading** as being of that origin or source; or

(iv) in the case of gems, a work which is made of a particular material, if the **lot** is described in the **Heading** as being made of that material.

authenticity warranty: the guarantee we give in this agreement that a **lot** is **authentic** as set out in section E2 of this agreement.

buyer's premium: the charge the buyer pays us along with the **hammer price**.

catalogue description: the description of a **lot** in the catalogue for the auction, as amended by any **saleroom notice**.

Christie's Group: Christie's International Plc, its subsidiaries and other companies within its corporate group.

condition: the physical **condition** of a **lot**.

due date: has the meaning given to it in paragraph F1(a).

estimate: the price range included in the catalogue or any **saleroom notice** within which we believe a **lot** may sell. **Low estimate** means the lower figure in the range and **high estimate** means the higher figure. The **mid estimate** is the midpoint between the two.

hammer price: the amount of the highest bid the **auctioneer** accepts for the sale of a **lot**.

Heading: has the meaning given to it in paragraph E2.

lot: an item to be offered at auction (or two or more items to be offered at auction as a group).

other damages: any special, consequential, incidental or indirect damages of any kind or any damages which fall within the meaning of 'special', 'incidental' or 'consequential' under local law.

purchase price: has the meaning given to it in paragraph F1(a).

provenance: the ownership history of a **lot**.

qualified: has the meaning given to it in paragraph E2 and **Qualified Headings** means the section headed **Qualified Headings** on the page of the catalogue headed 'Important Notices and Explanation of Cataloguing Practice'.

reserve: the confidential amount below which we will not sell a **lot**.

saleroom notice: a written notice posted next to the **lot** in the saleroom and on www.christies.com, which is also read to prospective telephone bidders and notified to clients who have left commission bids, or an announcement made by the **auctioneer** either at the beginning of the sale, or before a particular **lot** is auctioned.

UPPER CASE type: means having all capital letters.

warranty: a statement or representation in which the person making it guarantees that the facts set out in it are correct.

VAT SYMBOLS AND EXPLANATION

You can find a glossary explaining the meanings of words coloured in bold on this page at the end of the section of the catalogue headed 'Conditions of Sale'

VAT payable

Symbol	
No Symbol	No VAT will be charged on the hammer price . VAT at 7.7% will be charged on the buyer's premium .
+	VAT will be charged at 7.7% on both the hammer price and buyer's premium .

VAT Exemptions/Refunds on Export

1. If you appoint Christie's Art Transport or one of our authorised shippers to arrange export/shipping of your purchased **lots** out of the Swiss customs territory (being Switzerland and the principality of Liechtenstein), we will issue you an export invoice exempt from Swiss VAT. If you later cancel or change the shipment we will issue a revised invoice charging you all applicable tax charges.

2. If you wish to arrange your own export of your purchased **lots** out of the Swiss Customs territory either:

a) using your own shipper or by hand carrying your purchase out of the Swiss customs territory; or

b) if you request us to deliver your purchase to a Freeport in Switzerland (for non-Swiss resident buyers only);

then you must pay all applicable Swiss VAT charges in full, before we release or deliver the **lots** to you or your authorised agents.

3. Please note that Christie's is only able to issue refunds of the applicable Swiss VAT charged in the circumstances outlined in paragraph 2 above, if we receive the following:

a) satisfactory evidence of a definitive export of the purchased **lots** out of the Swiss customs territory (e.g. a customs stamped Swiss export assessment) demonstrating a correct export of the purchased **lots** within

(i) three months of the date of the auction for direct exports (not via the Freeport); or (ii) six months from the date of the auction for exports via the Freeport;

b) your written confirmation that you have not used the **lot** in Switzerland prior to its export; and

c) your written confirmation that you have not and will not request a refund of the Swiss VAT from the Swiss VAT authority.

4. If you have any questions about VAT please contact Post-Sale Services on +41 22 319 1780 or PostSaleSwiss@christies.com.

SYMBOLS USED IN THIS CATALOGUE

The meaning of words coloured in **bold** in this section can be found at the end of the section of the catalogue headed 'Conditions of Sale'.

o

Christie's has a direct financial interest in the **lot**. See Important Notices and Explanation of Cataloguing Practice.

△

Property in which Christie's or another **Christie's Group** company has an ownership or financial interest. See Important Notices and Explanation of Cataloguing Practice.

◆

Christie's has a direct financial interest in the **lot** and has funded all or part of our interest with the help of someone else. See Important Notices and Explanation of Cataloguing Practice.

λ

Artist's Resale Right. See Section D3 of the Conditions of Sale.

□

A party with a direct or indirect interest in the **lot** who may have knowledge of the **lot's reserve** or other material information may be bidding on the **lot**.

•

Lot offered without **reserve** which will be sold to the highest bidder regardless of the pre-sale **estimate** in the catalogue.

~

Lot incorporates material from endangered species which could result in export restrictions. See Section H2(c) of the Conditions of Sale.

ψ

Lot incorporates material from endangered species which is shown for display purposes only and is not for sale. See Section H2(g) of the Conditions of Sale.

⊕

Lot may require removal of watch batteries prior to shipping. See Section H2(g) of the Conditions of Sale.

+

See VAT Symbols and Explanation.

Please note that **lots** are marked as a convenience to you and we shall not be liable for any errors in, or failure to, mark a **lot**.

IMPORTANT NOTICES

CHRISTIE'S INTEREST IN PROPERTY CONSIGNED FOR AUCTION

△ Property in which Christie's has an ownership or financial interest

From time to time, Christie's may offer a **lot** in which Christie's has an ownership interest or a financial interest. Such property is identified in the catalogue with the symbol △ next to its **lot** number. Where Christie's has an ownership or financial interest in every **lot** in the catalogue, Christie's will not designate each **lot** with a symbol, but will state its interest in the front of the catalogue.

◦ Minimum Price Guarantees

On occasion, Christie's has a direct financial interest in the outcome of the sale of certain **lots** consigned for sale. This will usually be where it has guaranteed to the Seller that whatever the outcome of the auction, the Seller will receive a minimum sale price for the work. This is known as a minimum price guarantee. Where Christie's holds such financial interest we identify such **lots** with the symbol ◦ next to the **lot** number.

◊ Third Party Guarantees/Irrevocable bids

Where Christie's has provided a Minimum Price Guarantee, it is at risk of making a loss, which can be significant if the **lot** fails to sell. Christie's therefore sometimes chooses to share that risk with a third party who agrees prior to the auction to place an irrevocable written bid on the **lot**. If there are no other higher bids, the third party commits to buy the **lot** at the level of their irrevocable written bid. In doing so, the third party takes on all or part of the risk of the **lot** not being sold. **Lots** which are subject to a third party guarantee arrangement are identified in the catalogue with the symbol ◊.

In most cases, Christie's compensates the third party in exchange for accepting this risk. Where the third party is the successful bidder, the third party's remuneration is based on a fixed financing fee. If the third party is not the successful bidder, the remuneration may either be based on a fixed fee or an amount calculated against the final **hammer price**. The third party may also bid for the **lot** above the irrevocable written bid.

Third party guarantors are required by us to disclose to anyone they are advising their financial interest in any **lots** they are guaranteeing. However, for the avoidance of any doubt, if you are advised by or bidding through an agent on a **lot** identified as being subject to a third party guarantee you should always ask your agent to confirm whether or not he or she has a financial interest in relation to the **lot**.

▫ Bidding by parties with an interest

When a party with a direct or indirect interest in the **lot** who may have knowledge of the **lot's reserve** or other material information may be bidding on the **lot**, we will mark the **lot** with this symbol ▫. This interest can include beneficiaries of an estate that consigned the **lot** or a joint owner of a **lot**. Any interested party that successfully bids on a **lot** must comply with Christie's Conditions of Sale, including paying the **lot's full Buyer's Premium** plus applicable taxes.

Other Arrangements

Christie's may enter into other arrangements not involving bids. These include arrangements where Christie's has advanced money to consignors or prospective purchasers or where Christie's has shared the risk of a guarantee with a partner without the partner being required to place an irrevocable written bid or otherwise participating in the bidding on the **lot**. Because such arrangements are unrelated to the bidding process they are not marked with a symbol in the catalogue.

STORAGE AND COLLECTION

Buyers are advised that all purchases not collected on the day of the auction will be held for collection at no charge for twenty-eight days.

Sellers

Unsold **lots** that are not going to be re-offered in a later sale can be collected at Christie's, 12, Rue du Mont-Blanc, 1201 Geneva. Tel: +41 (0)22 319 1736, Fax: +41 (0)22 319 1731

Collection Times

Items can be collected from Christie's offices in Geneva at 12, Rue du Mont-Blanc, 1201 Geneva from Friday 19 May, for a period of 28 days.

CULTURAL PROPERTY

Certain **lots** consigned to us for sale are subject to the Swiss Federal Law on the international transfer of Cultural Property. This law contains rules governing the export of Cultural Property as defined by the UNESCO Convention of 14 November 1970, which sets out the measures to be taken in order to prevent the illicit import, export and trading of Cultural Property. Pursuant to this law, the export of such Cultural Property from Switzerland must be declared and prior authorisation may also be required. Please contact us if you require any further information.

REGARDING ESTIMATED WEIGHTS

Certain weights in the catalogue have been estimated through measurement. These figures are to be used as approximate guidelines and should not be relied upon as exact.

EXPLANATION OF CATALOGUING PRACTICE

Terms used in this catalogue have the meanings ascribed to them below. Please note that all statements in a catalogue or **lot** description as to authorship are made subject to the provisions of the Conditions of Sale, including the **authenticity warranty**. Our use of these expressions does not take account of the condition of the **lot** or of the extent of any restoration. Written condition reports are usually available on request.

A term and its definition listed under 'Qualified Headings' is a qualified statement as to authorship. While the use of this term is based upon careful study and represents the opinion of specialists, Christie's and the consignor assume no risk, liability and responsibility for the authenticity of authorship of any **lot** in this catalogue described by this term, and the **authenticity warranty** shall not be available with respect to **lots** described using this term.

EXPORT AND IMPORT

Gold

Gold of less than 18ct does not qualify in all countries as 'gold' and may be refused import into those countries as 'gold'.

Watch bands made of protected species

Many of the watches offered for sale in this catalogue are pictured with straps made of endangered or protected animal materials such as alligator or crocodile. These **lots** are marked with the symbol ~ in the catalogue. These endangered species straps are shown for display purposes only and are not for sale. Christie's will remove and retain the strap prior to shipment from the sale site. At some sale sites, Christie's may, at its discretion, make the displayed endangered species strap available to the buyer of the **lot** free of charge if collected in person from the sale site within 1 year of the date of the sale. Please check with the department for details on a particular **lot**.

CONDITION

Almost all clocks and watches are repaired in their lifetime and may include parts which are not original. We do not give a warranty that any individual component part of any watch is authentic. Watchbands described as "associated" are not part of the original watch and may not be authentic. Clocks may be sold without pendulums, weights or keys.

As collectors' watches often have very fine and complex mechanisms, a general service, change of battery or further repair work may be necessary, for which you are responsible. We do not give a warranty that any watch is in good working order. Certificates are not available unless described in the catalogue.

Most wristwatches have been opened to find out the type and quality of movement. For that reason, wristwatches with water resistant cases may not be waterproof and we recommend you have them checked by a competent watchmaker before use.

Please note that all Rolex watches in the Christie's sale catalogue are sold as viewed and that Christie's cannot guarantee the authenticity of any individual component part of these Rolex watches. The bracelets described as "associated" are not part of the original piece and may not be authentic.



MAGNIFICENT JEWELS

New York, 7 June 2023

VIEWING

Geneva 14-17 May, 2023

Hong Kong 24-27 May, 2023

New York 2-6 June, 2023

CONTACT

Daphne Lingon

usjewelsonline@christies.com

+1 212 636 2300

Property from the Collection of Terry Allen Kramer
VAN CLEEF & ARPELS SET OF RUBY, EMERALD,
DIAMOND AND ENAMEL JEWELRY
\$400,000-600,000 USD

CHRISTIE'S



THE GOLDEN FLAME
COLOURED DIAMOND AND DIAMOND RING
8.92 carat, Fancy Vivid Yellow-Orange, Internally Flawless
HK\$20,000,000 - 30,000,000
US\$2,600,000 - 3,800,000

MAGNIFICENT JEWELS

Hong Kong, 27 May 2023

VIEWING

24-27 May 2023

Hong Kong Convention & Exhibition Centre

No 1 Expo Drive, Wanchai, Hong Kong

CONTACT

Vickie Sek

vsek@christies.com

+852 2978 9922

CHRISTIE'S



PROPERTY OF A LADY
BOUCHERON: A FINE EARLY 20TH CENTURY DIAMOND TIARA/BANDEAU, CIRCA 1915
£100,000-150,000

JEWELS ONLINE: THE LONDON EDIT

London, 2-15 June 2023

VIEWING

2-14 June 2023
8 King Street
London SW1Y 6QT

CONTACT

Henry Bailey
hbailey@christies.com
+44 (0)20 7389 2382

CHRISTIE'S



AN EXCEPTIONAL VAN CLEEF & ARPELS RUBY AND DIAMOND 'JARRETIÈRE' BRACELET
CIRCA 1937
\$2,500,000-4,500,000 USD

**THE MAGNIFICENT JEWELS OF
ANNE EISENHOWER**

New York, 7 June 2023

VIEWING

Geneva 14 - 17 May, 2023

Hong Kong 24 - 27 May, 2023

New York 2 - 6 June, 2023

CONTACT

Daphne Lingon

usjewelonline@christies.com

+1 212 636 2300

CHRISTIE'S



VAN CLEEF & ARPELS
A 'MYSTERY-SET' RUBY AND DIAMOND 'LEAVES' PENDANT
€80,000 - 100,000

JOAILLERIE PARIS

Paris, 9 June - 21 June 2023

VIEWING

17-21 June 2023
9, avenue Matignon
75008 Paris

CONTACTS

Violaine d'Astorg
vdastorg@christies.com
+33 (0)1 40 76 85 81

Baoming Li
baomingli@christies.com
+33 (0)1 40 76 72 59

CHRISTIE'S

UNDER THE HIGH PATRONAGE OF H.S.H. PRINCE ALBERT II OF MONACO

FOR RESEARCH INTO
DUCHENNE MUSCULAR DYSTROPHY

ONLYWATCH

CREATE BEAUTY TO DO GOOD

COLLECTION REVEAL

29 JUNE 2023

3PM CEST - ONLYWATCH.COM

AUCTION

5 NOVEMBER 2023

2PM-PALEXPO, GENEVA

WORLDWIDE SALEROOMS AND OFFICES AND SERVICES

AMERICAS

BOGOTA
+571 635 54 00
Juanita Madrinan
(Consultant)

BUENOS AIRES
+54 11 43 93 42 22
Cristina Carlisle

CHICAGO
+1 312 787 2765
Catherine Busch

DALLAS
+1 214 599 0735
Capera Ryan

HOUSTON
+1 713 802 0191
Jessica Phifer

LOS ANGELES
+1 310 385 2600
Sonya Roth

MEXICO CITY
+52 55 5281 5446
Gabriela Lobo

MIAMI
+1 305 445 1487
Jessica Katz

-NEW YORK
+1 212 636 2000

PALM BEACH
+1 561 777 4275
David G. Ober (Consultant)

SAN FRANCISCO
+1 415 982 0982
Ellanor Notides

SANTIAGO
+56 2 2 2631642
Denise Ratinoff de Lira

SÃO PAULO
+55 21 3500 8944
Marina Bertoldi

TORONTO
+1 647 519 0957
Brett Sherlock (Consultant)

ASIA PACIFIC
BANGKOK
+66 (0) 2 252 3685
Prapavadee Sophonpanich

BEIJING
+86 (0)10 8583 1766
Rebecca Yang

-HONG KONG
+852 2760 1766

JAKARTA
+62 (0)21 7278 6268
Charmie Hamami

KUALA LUMPUR
+62 (0)21 7278 6268
Charmie Hamami

MUMBAI
+91 (22) 2280 7905
Sonal Singh

SEOUL
+82 2 720 5266
Jun Lee

-SHANGHAI
+86 (0)21 6355 1766
Rebecca Yang

SINGAPORE
+65 6715 9358
Kim Chuan Mok

TAIPEI
+886 2 2736 3356
Ada Ong

TOKYO
+81 (0)3 6267 1766
Katsura Yamaguchi

EUROPE, THE MIDDLE EAST AND AFRICA

-AMSTERDAM
+31 (0)20 57 55 255
Arno Verkade

BOLOGNA
+39 051 265 154
Benedetta Possati Vittori
Venenti (Consultant)

**BRITTANY, THE LOIRE
VALLEY & NORMANDY**
+33 (0)6 09 44 90 78
Virginie Gregory

BRUSSELS
+32 (0)2 512 88 30
Astrid Centner

CAMBODIA
+66 (0)2 252 3685
Prapavadee Sophonpanich

**CENTRE AUVERGNE
LIMOUSIN & BURGUNDY**
+33 (0)6 10 34 44 35
Marine Desproges-Gotteron

**CENTRAL &
SOUTHERN ITALY**
+39 348 520 2974
Alessandra Allaria (Consultant)

COPENHAGEN
+45 2612 0092
Rikke Juel Brandt (Consultant)

-DUBAI
+971 50 723 3274
Meagan Kelly Horsman

DÜSSELDORF
+49 211 491 59322
Gudrun Klemm

FRANKFURT
+49 170 840 7950
Natalie Radziwill

FLORENCE
+39 335 704 8823
Alessandra Niccolini di
Camugliano (Consultant)

-GENEVA
+41 (0)22 319 1766
Françoise Adam

HAMBURG
+49 (0)40 27 94 073
Christiane Gräfin
zu Rantzau

IRELAND
+353 (0)87 638 0996
Christine Ryall (Consultant)

ISTANBUL
+90 (532) 558 7514
Eda Kehale Argün
(Consultant)

LAOS
+66 (0)2 252 3685
Prapavadee Sophonpanich

LISBON
+351 919 317 233
Mafalda Pereira Coutinho
(Consultant)

+974 7731 3615
Farah Rahim Ismail
(Consultant)

-LONDON
+44 (0)20 7839 9060

MADRID
+34 91 532 66 27
Maria Garcia Yelo

-MILAN
+39 02 303 283 1
Cristiano De Lorenzo

MONACO
+377 97 97 11 00
Nancy Dotta

MUNICH
+49 (0)89 24 20 96 80
Marie Christine Gräfin Huyn

MYANMAR
+66 (0)2 252 3685
Prapavadee Sophonpanich

NORTH ITALY
+39 348 3131 021
Paola Gradi (Consultant)

**NORTH OF ENGLAND
AND WALES**
+44 (0)20 7752 3033
Jane Blood

OSLO
+47 949 89 294
Cornelia Svedman (Consultant)

-PARIS
+33 (0)1 40 76 85 85

**POITOU CHARENTES
AQUITAINE**
+33 (0)5 56 81 65 47
Marie-Cécile Moueix

**PROVENCE -
ALPES CÔTE D'AZUR**
+33 (0)6 71 99 97 67
Fabienne Albertini-Cohen

ROME
+39 06 686 33 33

SAUDI ARABIA
+44 (0)7904 250666
Zaid Belbagi (Consultant)

SCOTLAND
+44 (0)131 225 4756
Robert Lagneau

STUTTGART
+49 (0)71 12 26 96 99
Eva Susanne Schweizer

TEL AVIV
+972 (0)3 695 0695
Roni Gilat-Baharaff

TURIN
+39 347 2211 541
Chiara Massimello
(Consultant)

VENICE
+39 041 277 0086
Bianca Arrivabene Valenti
Gonzaga (Consultant)

VIENNA
+43 (0)1 533 881214
Angela Bailou

VIETNAM
+66 (0)2 252 3685
Prapavadee Sophonpanich

-ZURICH
+41 (0)44 268 1010
Jutta Nixdorf

AUCTION SERVICES

**CHRISTIE'S AUCTION
ESTIMATES**
Tel: +1 212 492 5485
www.christies.com

CORPORATE COLLECTIONS
Tel: +1 212 636 2464
Fax: +1 212 636 4929
Email: gsdlow@christies.com

ESTATES AND APPRAISALS
Tel: +1 212 636 2400
Fax: +1 212 636 2370
Email: info@christies.com

MUSEUM SERVICES
Tel: +1 212 636 2620
Fax: +1 212 636 4931
Email: awhiting@christies.com

OTHER SERVICES

CHRISTIE'S EDUCATION
New York
Tel: +1 212 355 1501
Fax: +1 212 355 7370
Email: newyork@christies.edu

Hong Kong
Tel: +852 2978 6768
Fax: +852 2525 3856
Email: hongkong@christies.edu

London
Tel: +44 (0)20 7665 4350
Fax: +44 (0)20 7665 4351
Email: london@christies.edu

**CHRISTIE'S
INTERNATIONAL
REAL ESTATE**
New York
Tel: +1 212 468 7182
Fax: +1 212 468 7141
Email:
info@christiesrealestate.com

London
Tel: +44 (0)20 7389 2551
Fax: +44 (0)20 7389 2168
Email:
info@christiesrealestate.com

Hong Kong
Tel: +852 2978 6788
Fax: +852 2760 1767
Email:
info@christiesrealestate.com

**CHRISTIE'S FINE ART
STORAGE SERVICES**
New York
Tel: +1 212 974 4579
Email: newyork@cfass.com

CHRISTIE'S REDSTONE
Tel: +1 212 974 4500

- DENOTES SALEROOM

ENQUIRIES?— Call the Saleroom or Office EMAIL— info@christies.com

For a complete salerooms & offices listing go to christies.com

CHRISTIE'S

ART FINANCE

**CHRISTIE'S WOULD BE HONOURED
TO PARTNER WITH YOU TO
ACHIEVE YOUR FINANCIAL GOALS.**

FLEXIBILITY

Access loans from US\$1 million up to US\$150 million at competitive interest rates, structured around your financial goals.

DISCRETION AND SPEED

Receive funds within 2-3 weeks once initial terms are agreed, with no personal financial information required.

DIVERSE CATEGORIES

Leverage a wide range of fine art and luxury goods as collateral.

EXPERTISE

Benefit from Christie's deep understanding of the art market and our unparalleled global network of specialists.

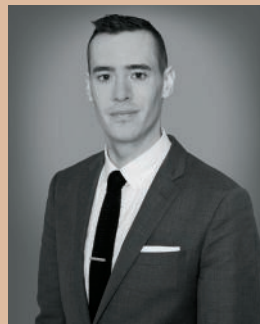
EASE

Save time and money with our seamless end-to-end service, from in-house valuations to facilitating loans to museum exhibitions.

YOUR CHRISTIE'S ART FINANCE TEAM



Sayuri Ganepola
Global Managing Director
sganepola@christies.com
+1 212 636 2648



Shaun Desiderio
Vice President
Regional Portfolio Manager,
Americas
sdesiderio@christies.com
+1 212 641 3612



FAQs
SCAN TO
FIND OUT
MORE





CHRISTIE'S

12 RUE DU MONT-BLANC 1201 GENEVA